

## Bi-colour LEDs indicate switch position

Bi-colour (red/green) LEDs can be used to give visual indication of the status of a toggle or other-type two position switch, provided the switch has one or more unused poles. Direction of current flow through the bi-colour LED is changed according to switch position. Two variants are possible, depending upon the number of poles available.

Fig. 1 shows the preferred arrangement, with current flow being

controlled by two poles. The alternative arrangement shown in Fig. 2 requires only one pole, but has more than twice the current drain. Allowing for 10-15mA forward diode current,  $R=(V-2)/0.012\Omega$ . In practice the intensity of the green LED is less than the red, so some experimentation is necessary to find the optimum values for the resistors.

R. Tregear,  
Pennant Hills, NSW.

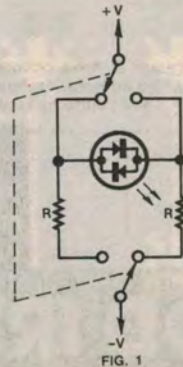


FIG. 1

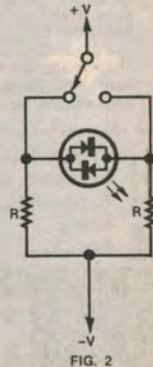


FIG. 2