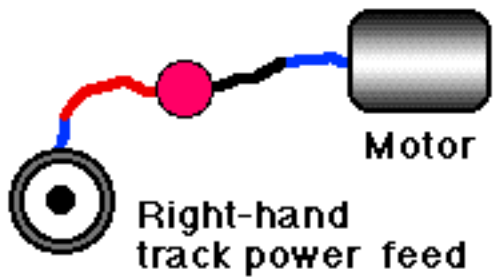


Rollins World Wide Web Page - www.mrollins.com

Trains	Newton	Consulting	Other				
Layout	HO	HOn30	Tips	Circuits	Kits	Geared Locos	
6 diode directional light	2 diode + 2 rectifier directional	1 rectifier, non-directional	non-directional for efficient "can" motors	dual alternating flashers	dual tandem flashers	simulate a Gyalite flasher	simple flashing light
simpler flashing light	simplest flashing light	infrared train detector	photocell train detector	modify flashing toy pin	1.5 volt DC power supply	hefty 1.5 VDC supply	constant 5 volts DC supply
modify Athearn locos	different electronic switches						

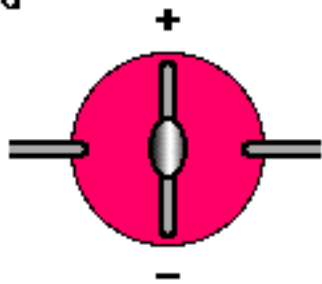
A single-rectifier, non-directional constant lighting circuit.

This project uses 1 rectifier and 3 differently-colored wires. Be sure to use lights rated at 1.5 volts, otherwise they will be much too dim.

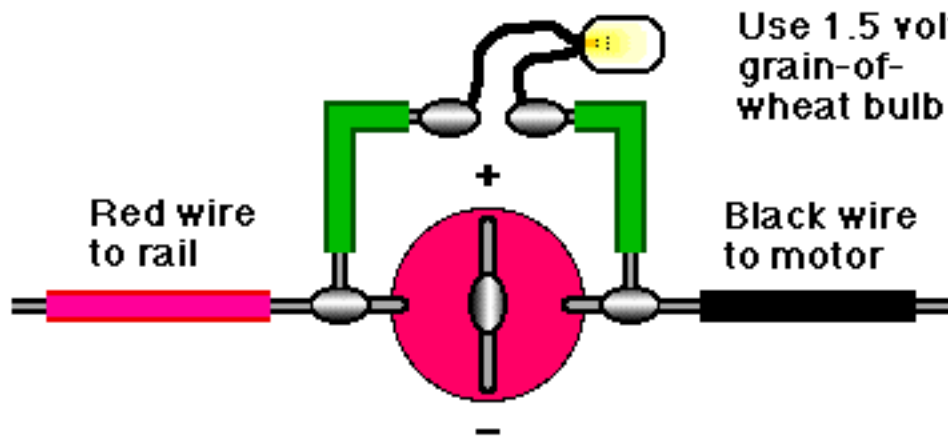


Cut existing wire from right-hand track power feed to motor, and install circuit so red wire goes to track power feed, and black wire connects to motor

This is underside of bridge rectifier



Step 1, solder the "+" and "-" terminals of the bridge rectifier together



Radio Shack
276-1152

Digi-Key
RB132-ND

All Electronics
FWB-10

Mouser
583-RB151

this drawing © 1995 Mark L. Rollins

www.mrollins.com