

## Micropower on-off indicator

The absence of a power on-off indicator has long been a major disadvantage of solid-state battery-powered devices. Although the power drain is so low that it has negligible effect on battery life, it is still disturbing to find that a battery-powered device has been left on for days, or even weeks. The light-emitting diode, or LED, is a miniature low-voltage, low-power device that makes an ideal pilot light.

The circuit in Fig. 2 is a novel pilot indicator recommended for installation in a solid-stage vom described in *Electronics Australia*. It runs off a 9-volt battery and draws an average of somewhat less than 2 mA.

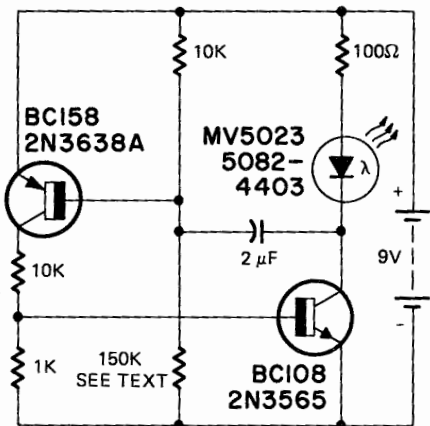


FIG. 2—LED IS PILOT LAMP for battery-powered test instrument. Transistor multivibrator pulses LED for more brightness.