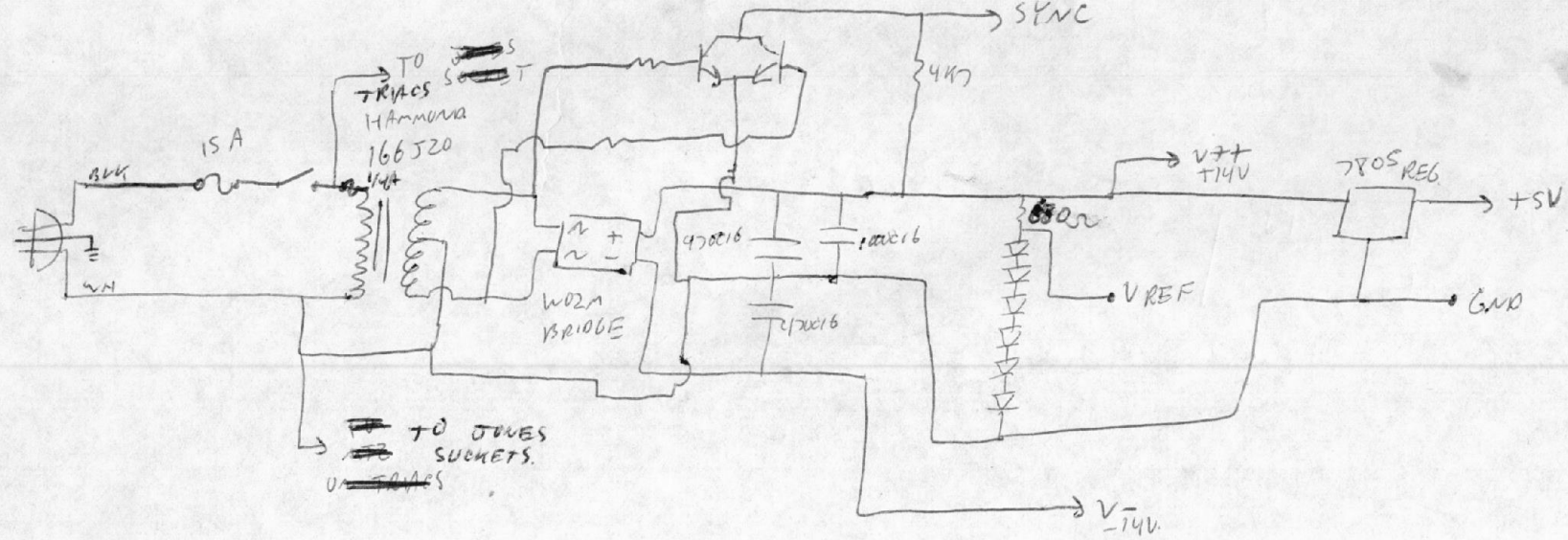
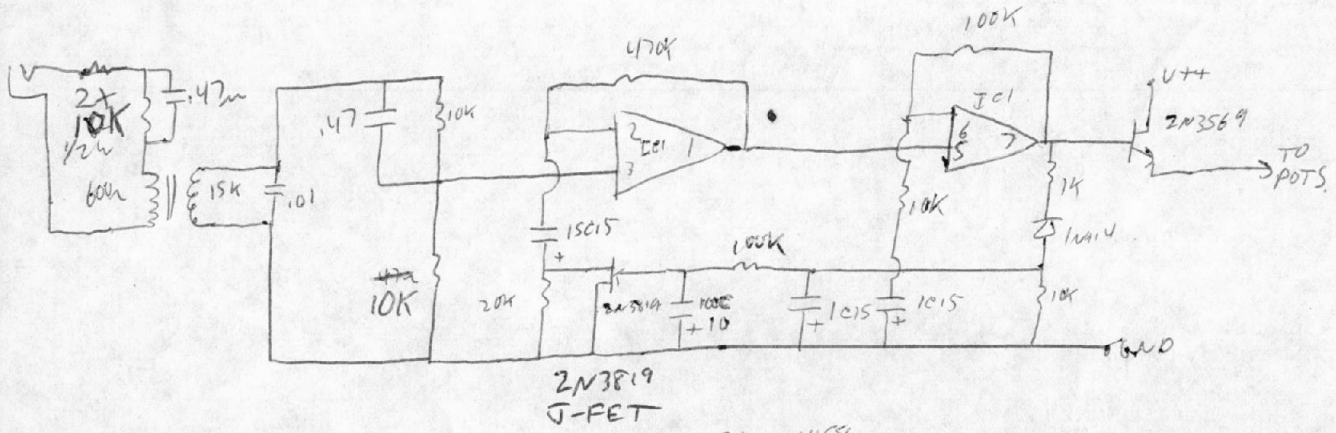


DIMMING COLOR ORGAN
POWER SUPPLY



AGC SECTION



V+ TO PINS 8 ON 1458'S
AND TO PIN 11 ON 4136'S
V- TO PINS 4 ON 1458'S
PIN 7 ON 4136.

Dec 2/77

D. F. Rose

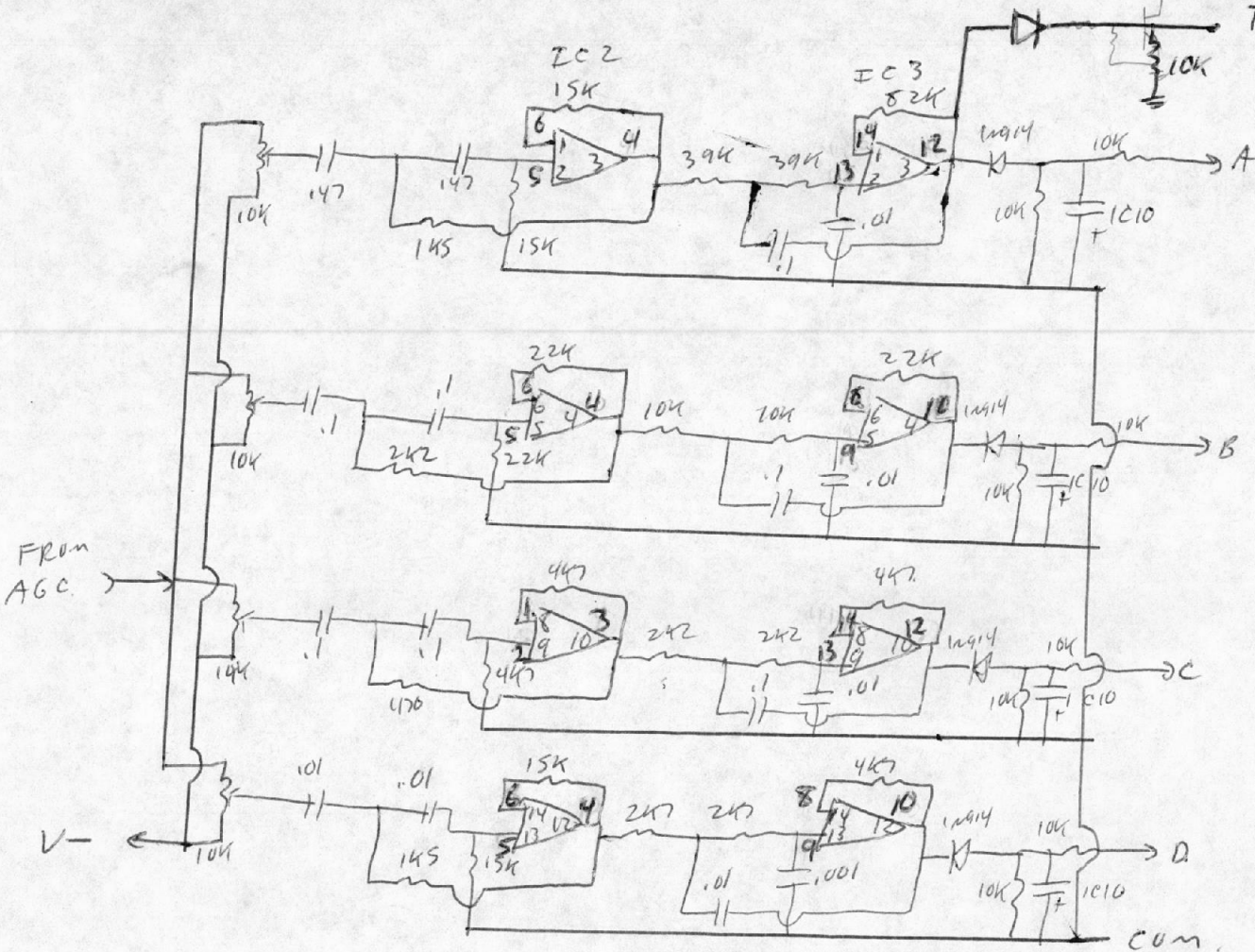
EC1 = 1458
Lamps actually brighten & dim in response to volume of each band of frequencies in the music.

DIMMING COLOR ORGAN.

FILTER SECTION

AUDIO TRIGGER SIGNAL TO DIGITAL BOARD.

S
2/5



FROM AGC

V -

com.

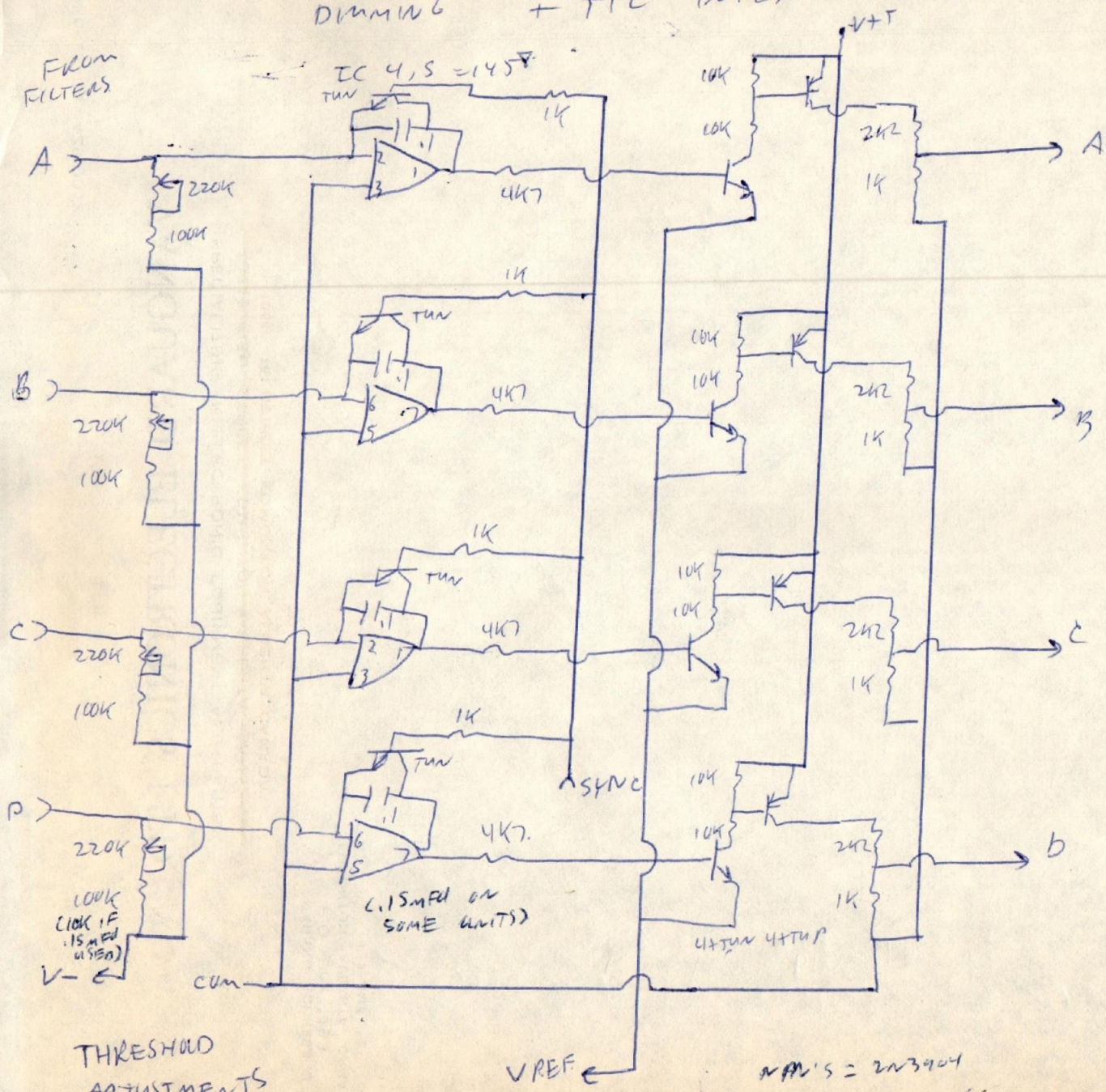
TO DIM SECTION

IC 2, 3 = 4136
POWER PINS 7-11+

Dec 2/77
D. Frose

DIMMING COLOR ORGAN.

DIMMING + TTL INTERFACE SECTIONS



TO SELECTOR GATE ON DIGITAL BOARD.

Dec 2/77

D. F. Rose

NPN'S = 2N3904
PNP'S = 2N3906

DWMW6 COLOR ORGAN CHASE EFFECTS GENERATOR CIRCUITS

AUDIO TRIGGER IN

EVEN FILTERS

AUDIO

AUTO

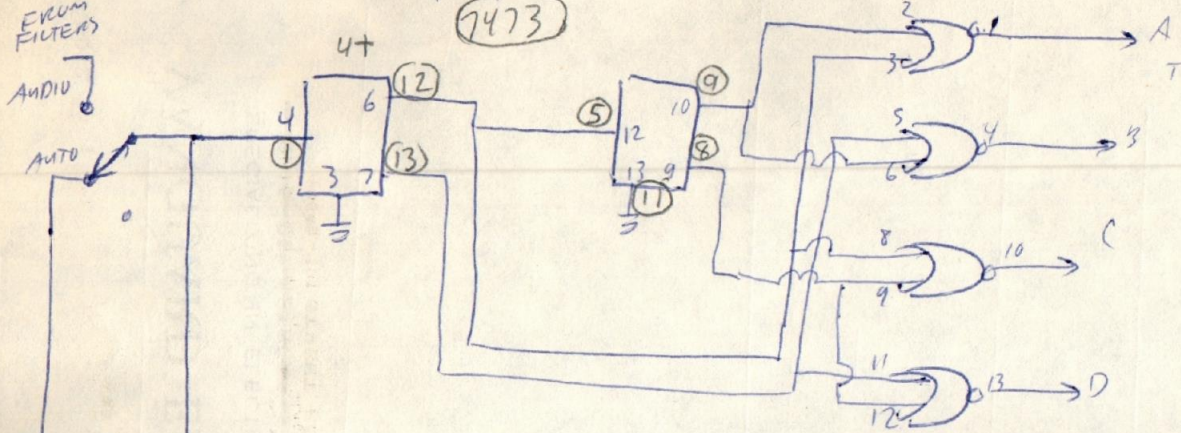
#1

IC6
9024

7473

IC7
7402

TO SELECTOR GATES

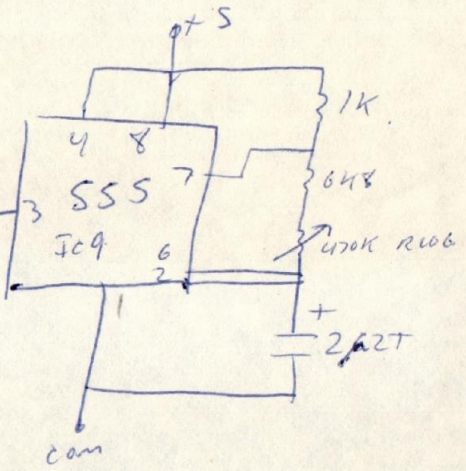
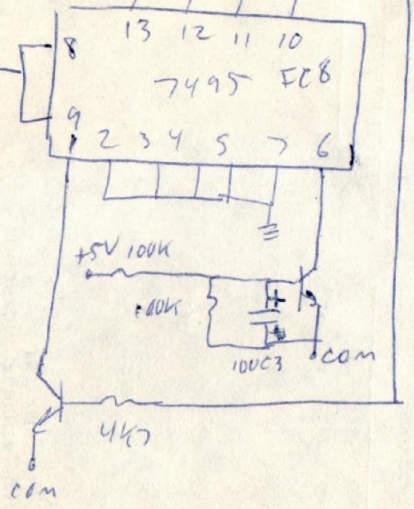


TO SEL GATES

D C B A

#2

7495 IC8



Dec 2/77
D.A. [signature]

DIMMING COLOR ORGAN. SELECTOR + OUTPUT Ckt

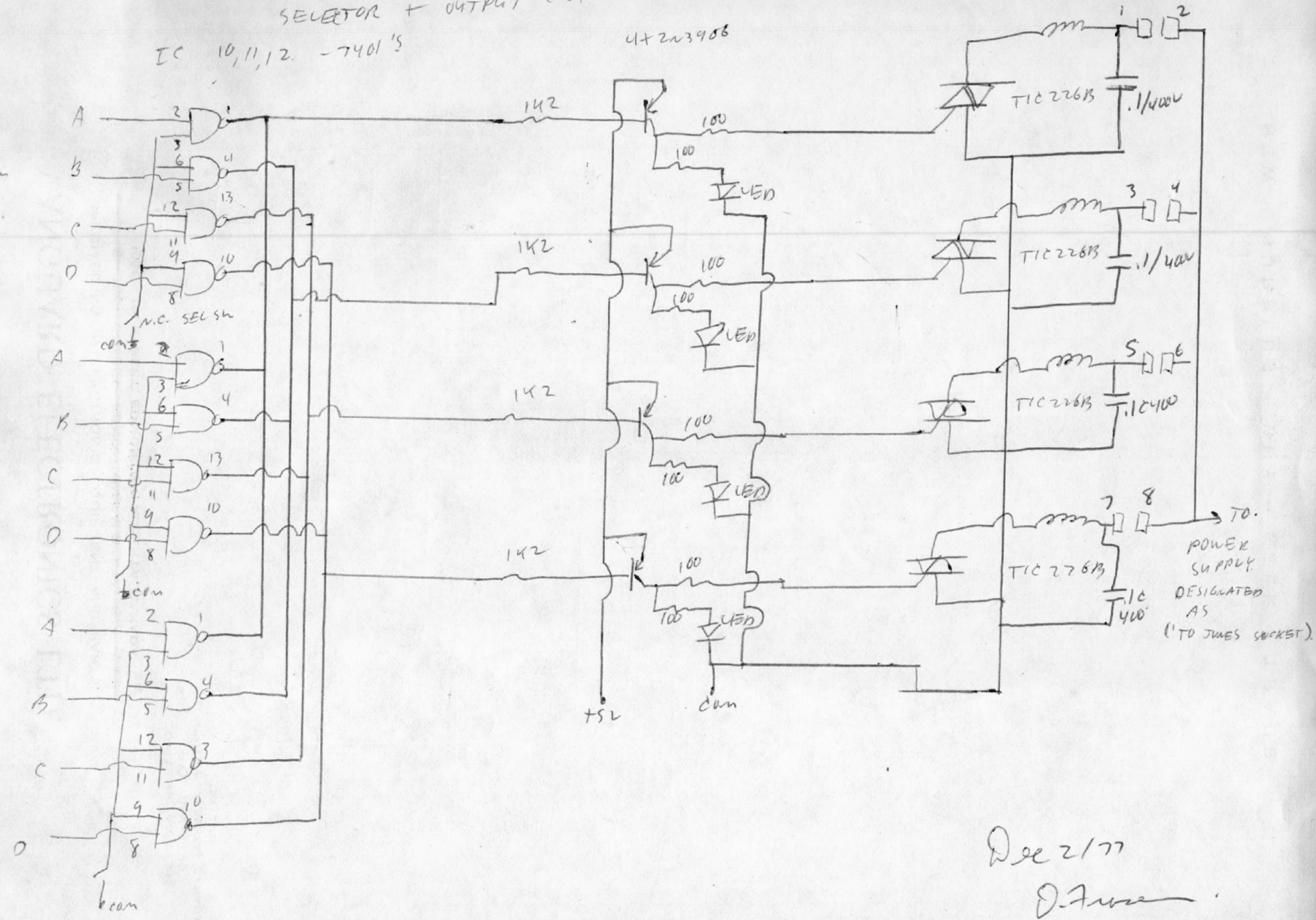
IC 10, 11, 12. - 7401'S

4x2N3906

FROM S/L.

FROM IC 7.

FROM IC 8.



Dec 2/77

D. F. [Signature]

VANGUARD ELECTRONICS LTD.

SPECIALIZING IN ELECTRONIC EQUIPMENT AND PARTS

~~10316 - 96TH STREET, EDMONTON, ALBERTA, CANADA~~

10645 - 101 STREET, EDMONTON, ALBERTA, CANADA

MAILING ADDRESS
P.O. BOX 1193
EDMONTON, ALBERTA, CANADA
T5J 2M5

Klondike Days Entertainment
July 14-26

'SUMPLACELSE CABARET'

Canada's All New

MALTON & HAMILTON SHOW



Early R2 buyer

Come Early and Avoid Disappointment

LOUNGE & DINING ROOM

Featuring:

LANG ACKROYD



LANG ACKROYD BAND

TAVERN "Night Fever"

DISCO

Plus:

"FOX GLOVE"



FOXGLOVE

KINGSWAY INN

10812 Kingsway Ave.

479-4266



FRASER
ELECTRONICS



BASS



LO-MID

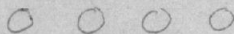


HI-MID



TREBLE

LAMP
CONTROLLER
MODEL-RL



EFFECT
SELECTORS



5/6



1



2

CHASE
TRIGGER



AUTO/AUDIO

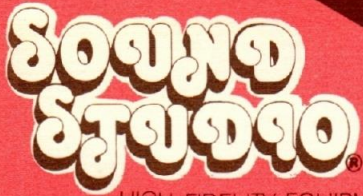


RATE



POWER

MADE IN
CANADA



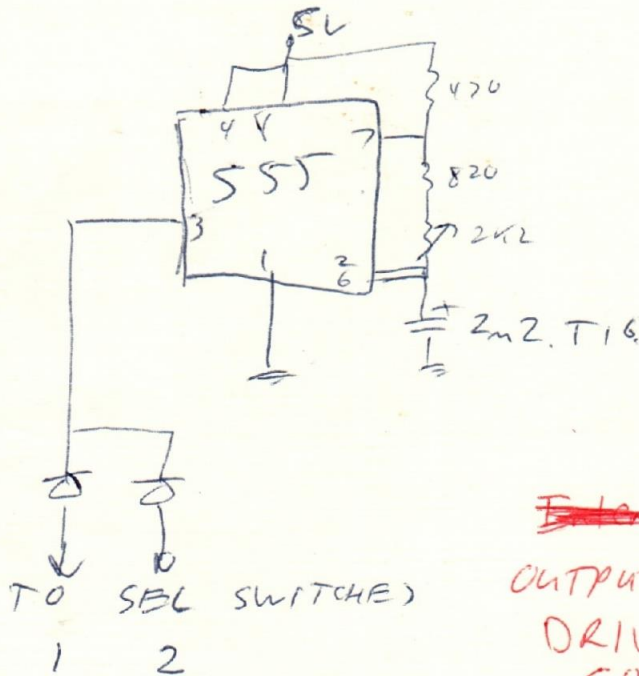
HIGH FIDELITY EQUIPMENT



Showrooms: 10443 • 124 Street Edmonton Alberta Canada T5N 1R7 (403) 488 • 2411

R2 F

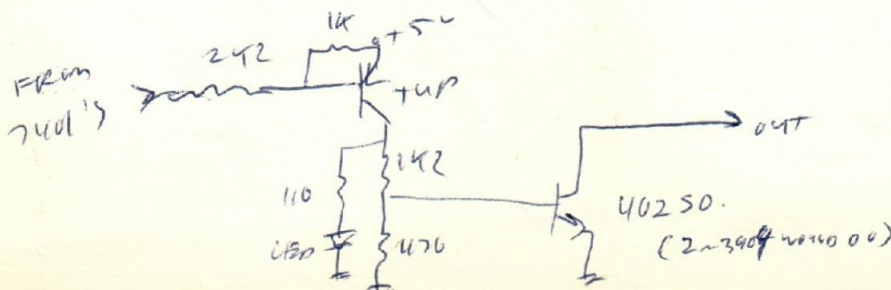
PULSE GEN cct FOR
FLUORESCENT LAMPS



APPROX FREQUENCY
= 178 Hz

~~FILE~~
OUTPUT PULSER TO
DRIVE IGNITION
COILS TO DRIVE
FLUORESCENT LAMPS

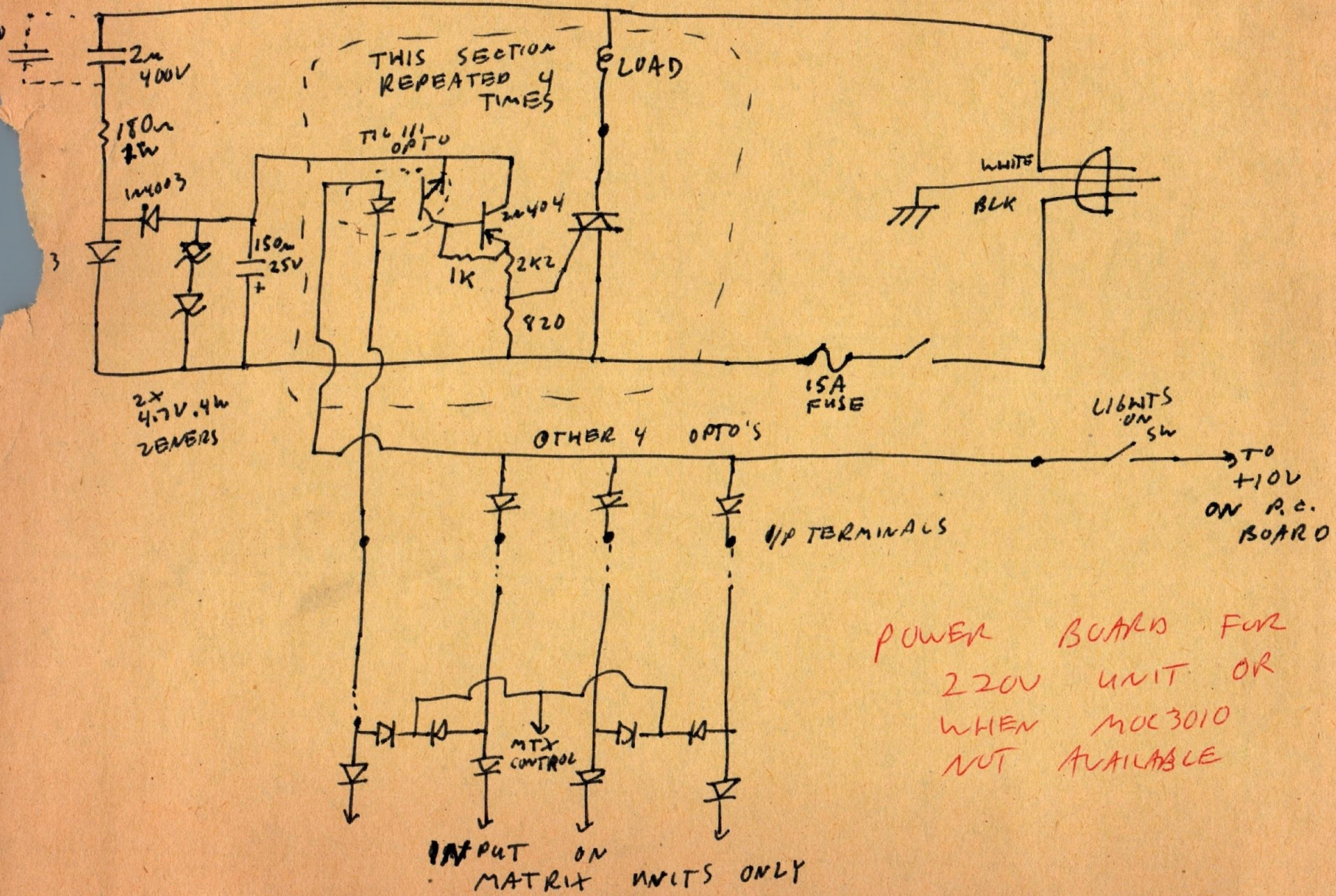
OUTPUT cct.

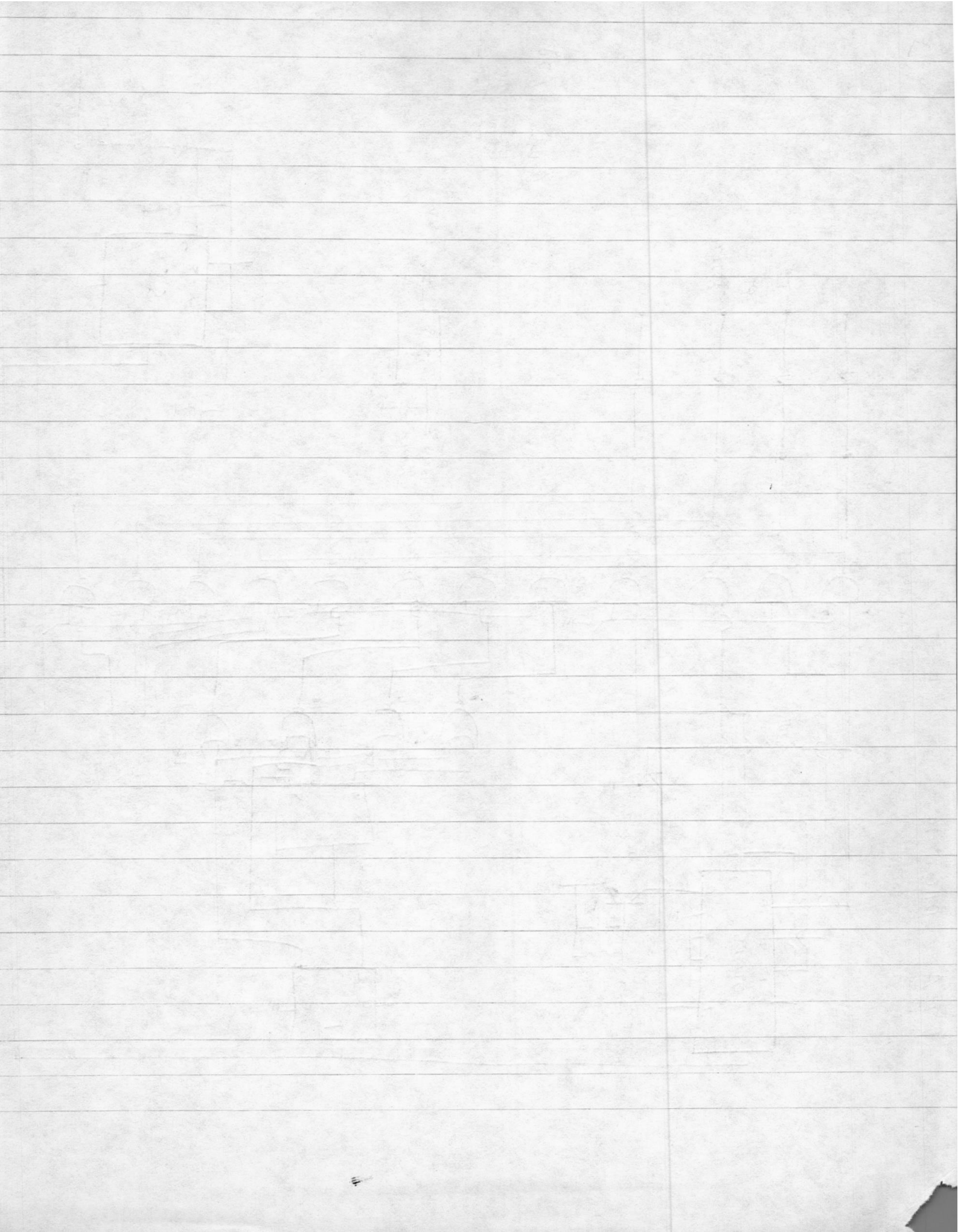


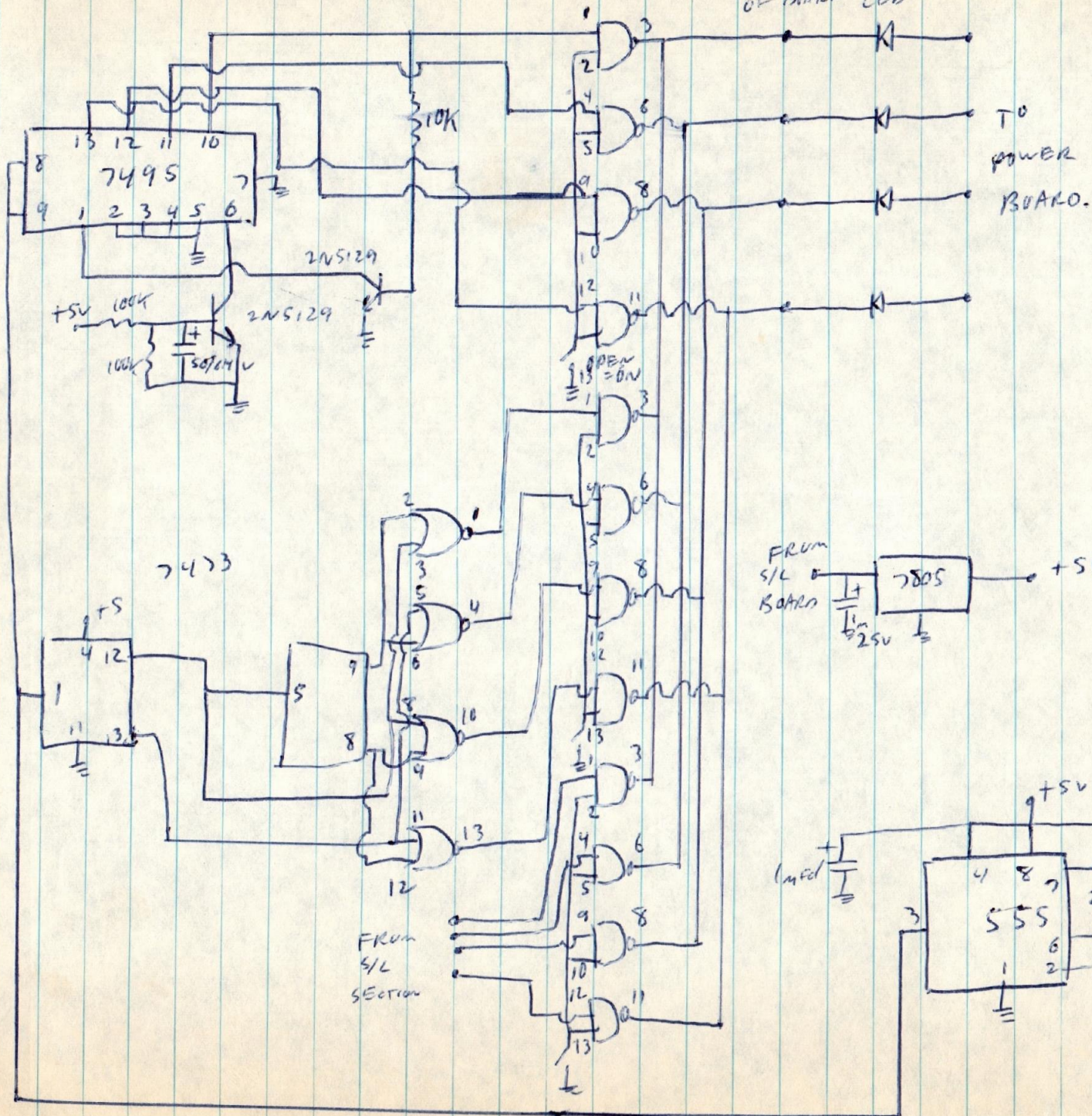
Jan 10/80
D. Frase

TIL III TRIAC BOARD.

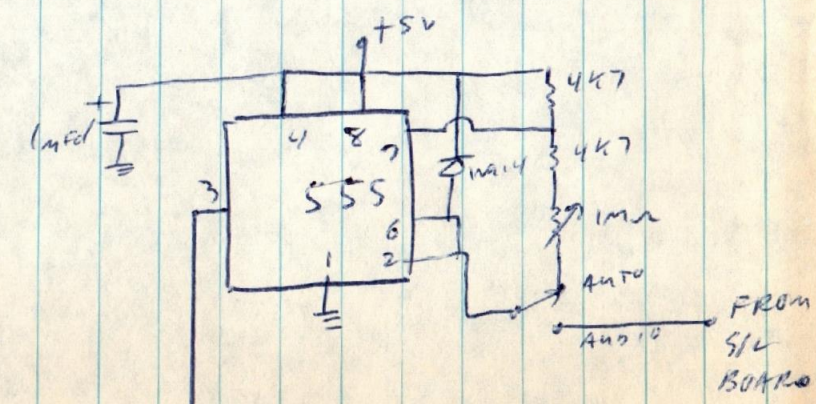
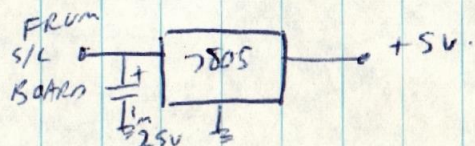
2m-400V
ON UNITS WITH
LOW SENSITIVITY
TRIACS







June 19/78
D. F. ...

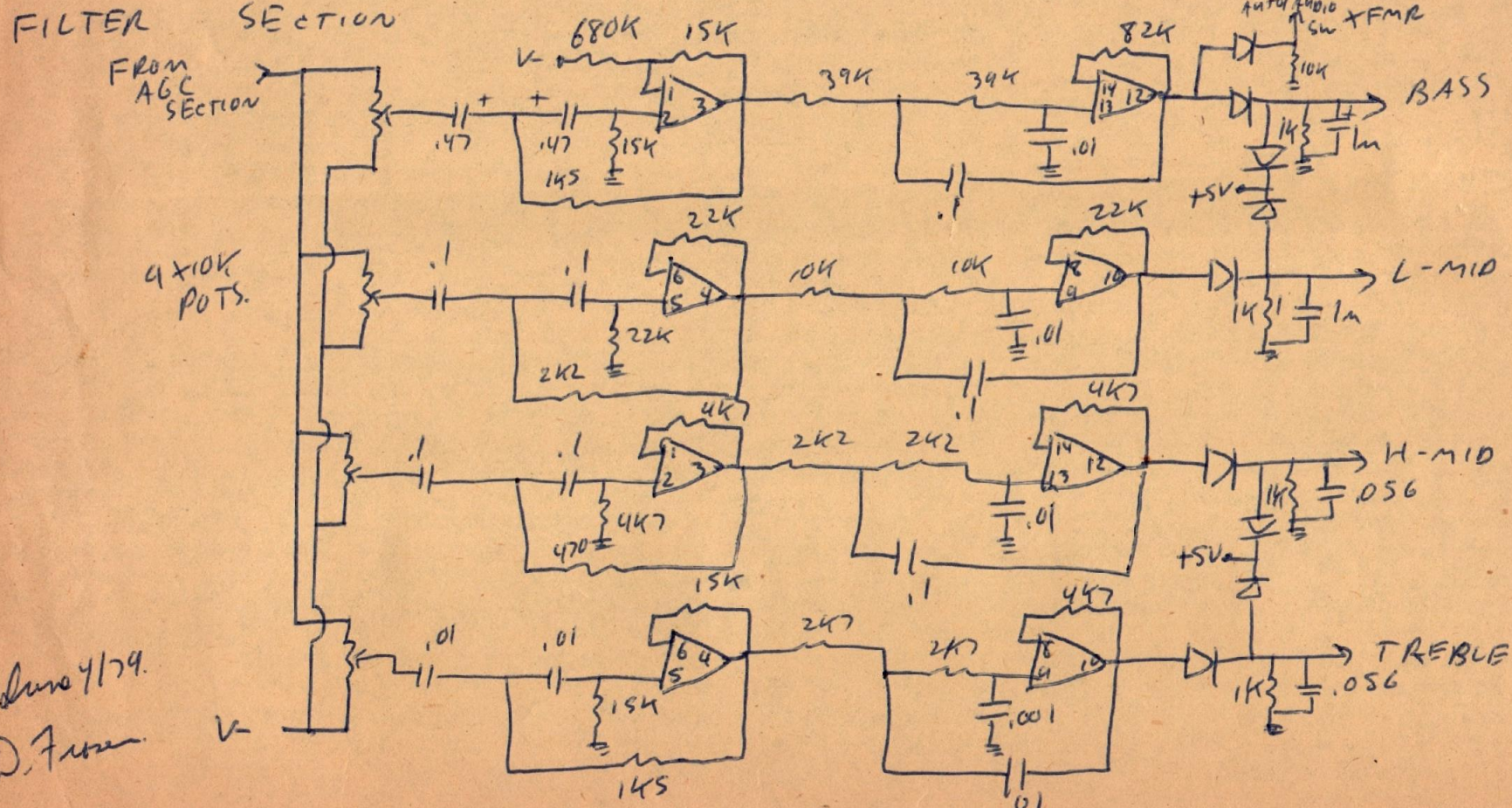
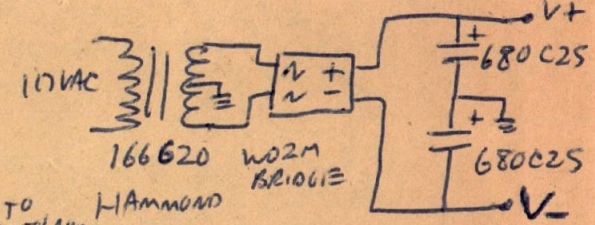
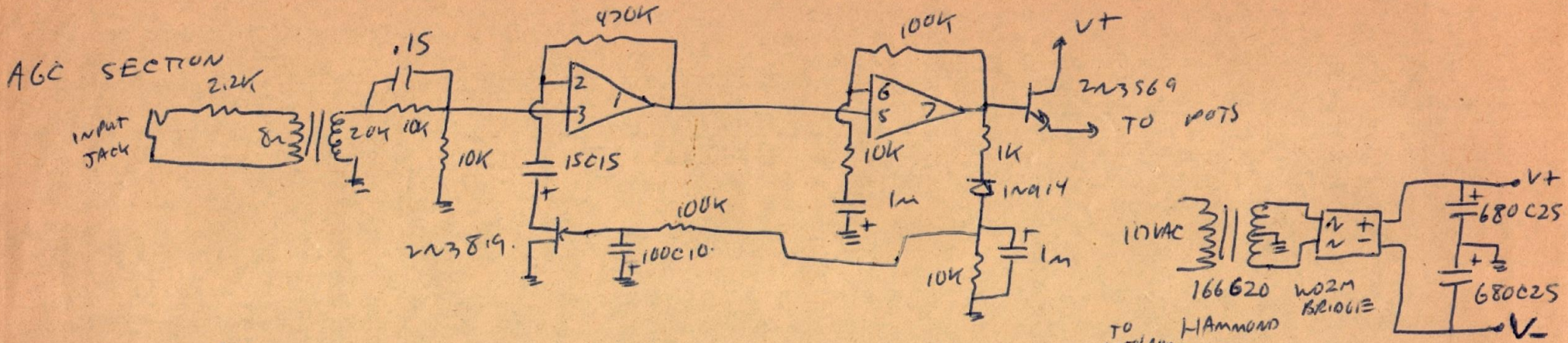


R2A

S/L

SECTION

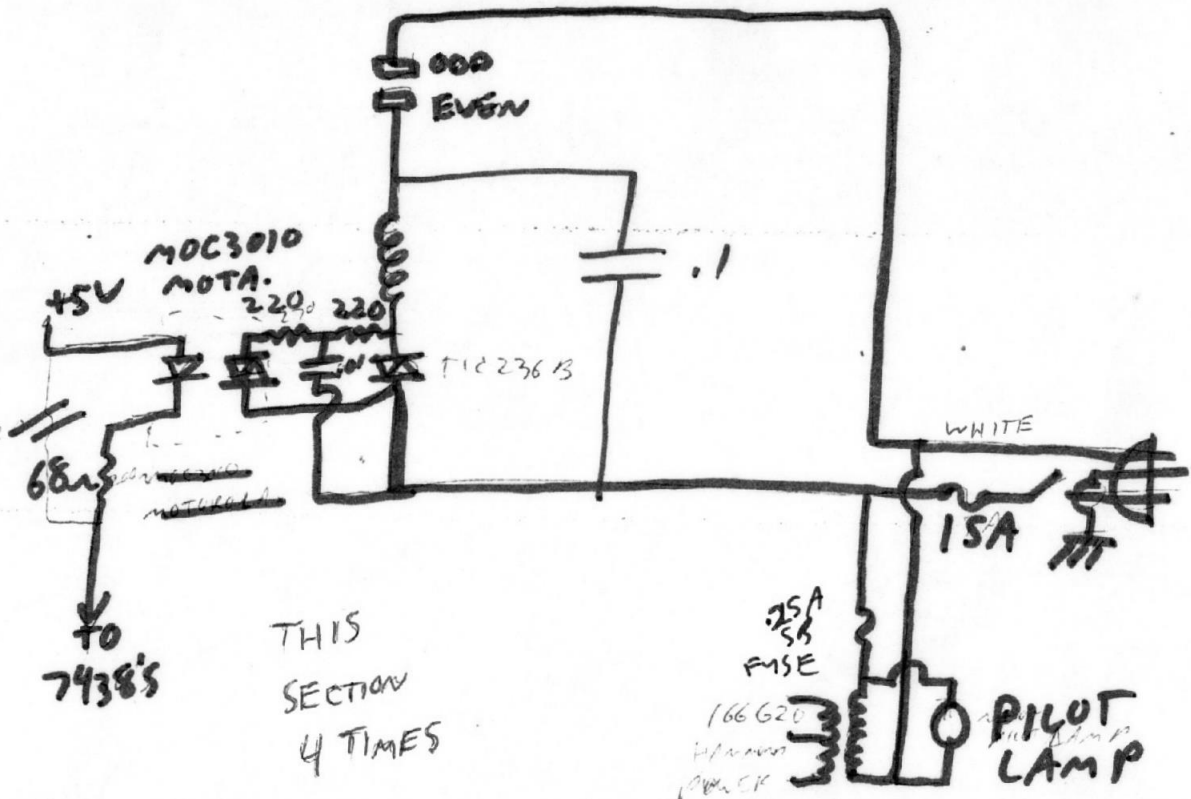
S.N. 20-4P.



Done 4/79.
D. F. [unclear]

IC = 2X 4136

LATER PRODUCTION
POWER BOARD



THIS SECTION
4 TIMES

15A
5A
FUSE
166620
HAMMOND
XFMR
PILOT
LAMP

Aug 23/78
D. J. [unclear]

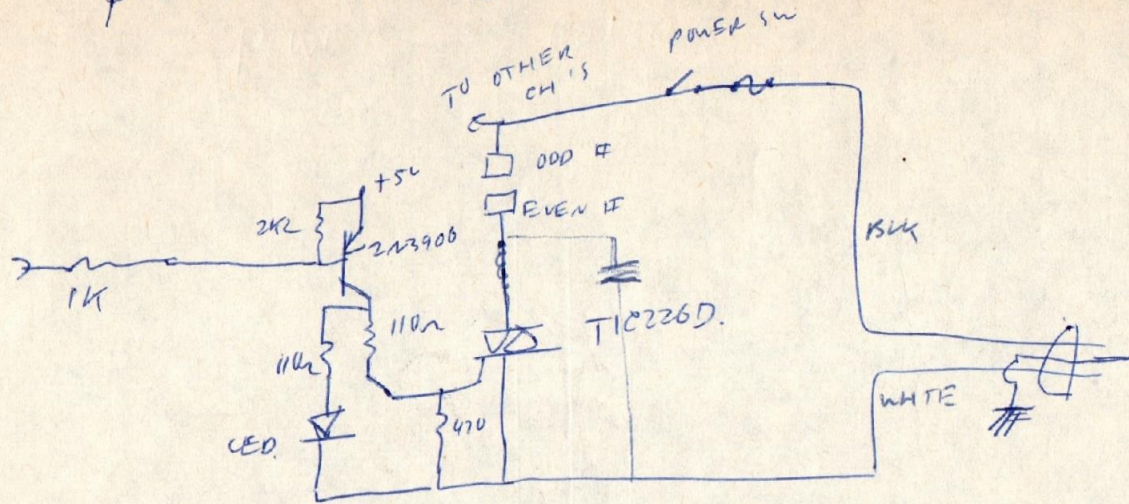
POWER

BOARD

OLD

EARLY PRODUCTION

S

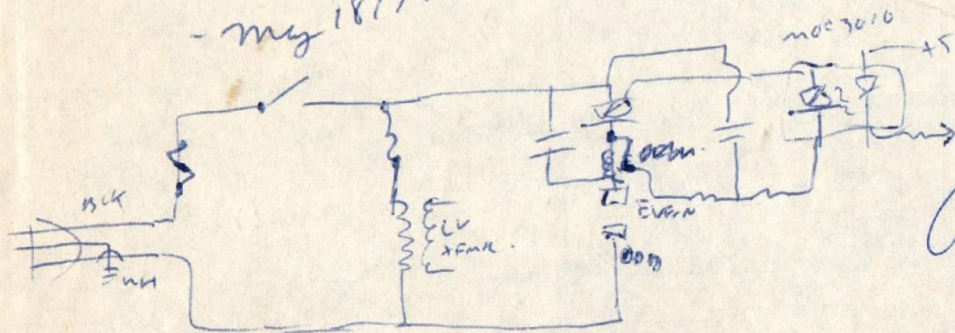


NEW

LATER

PRODUCTION > MAY 18/75

- May 18/75

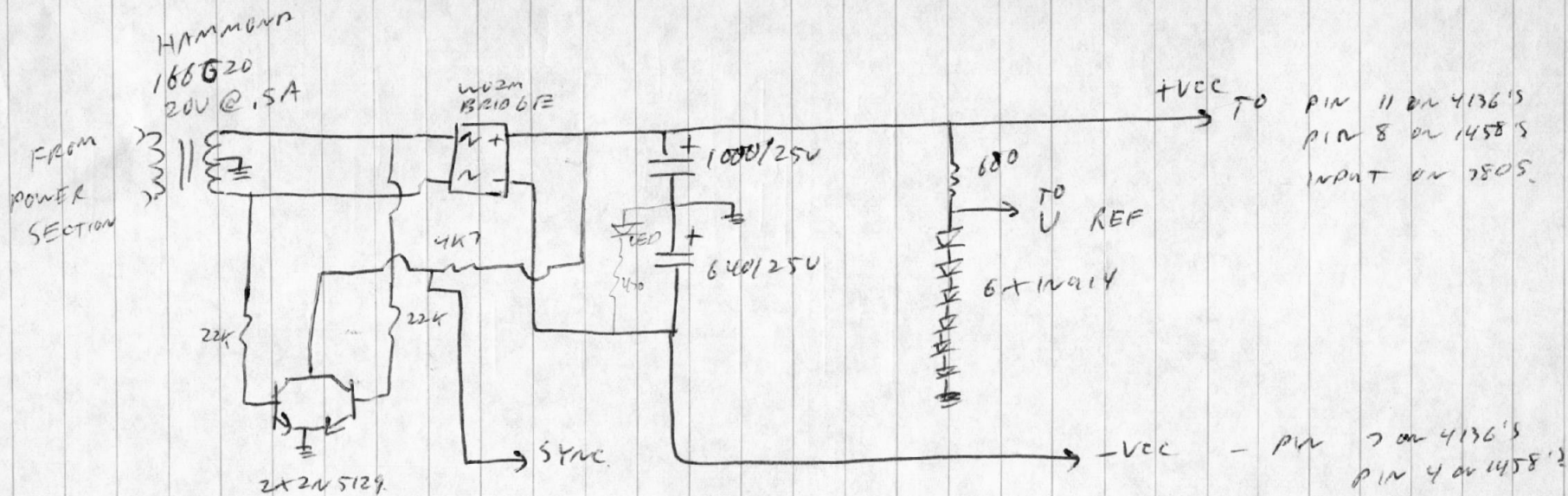


April 20/75

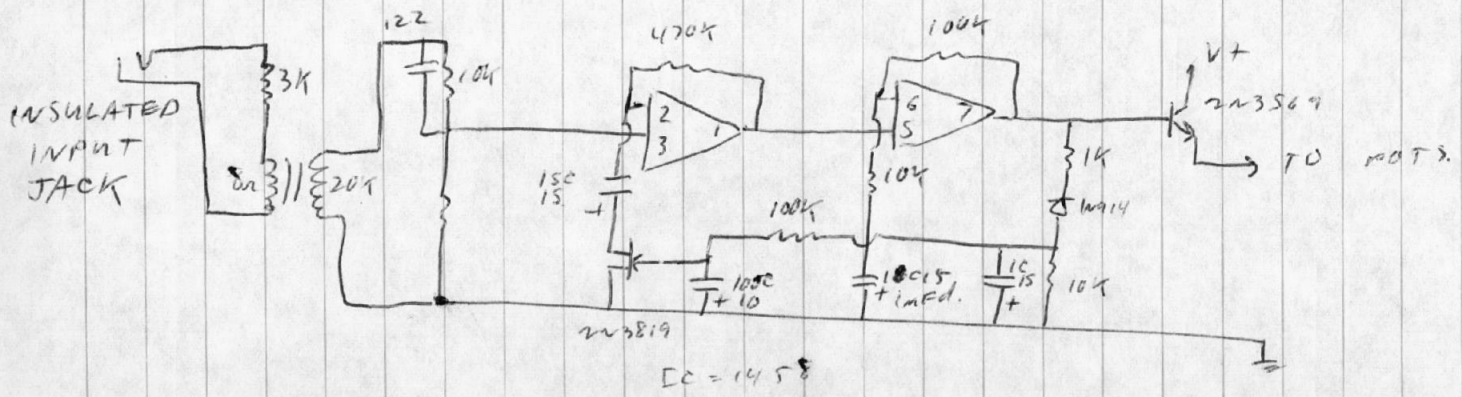
D. F. [Signature]

D. F. [Signature]

DIMMING S/L UNIT POWER SUPPLY

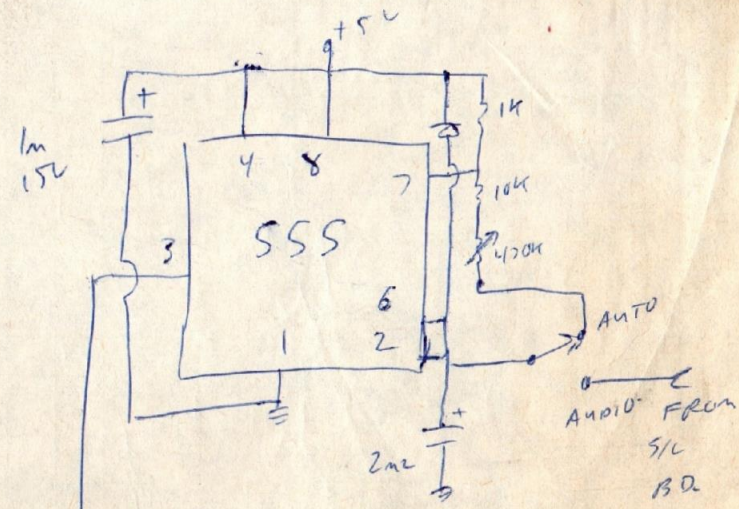
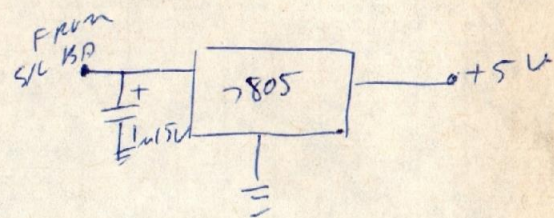
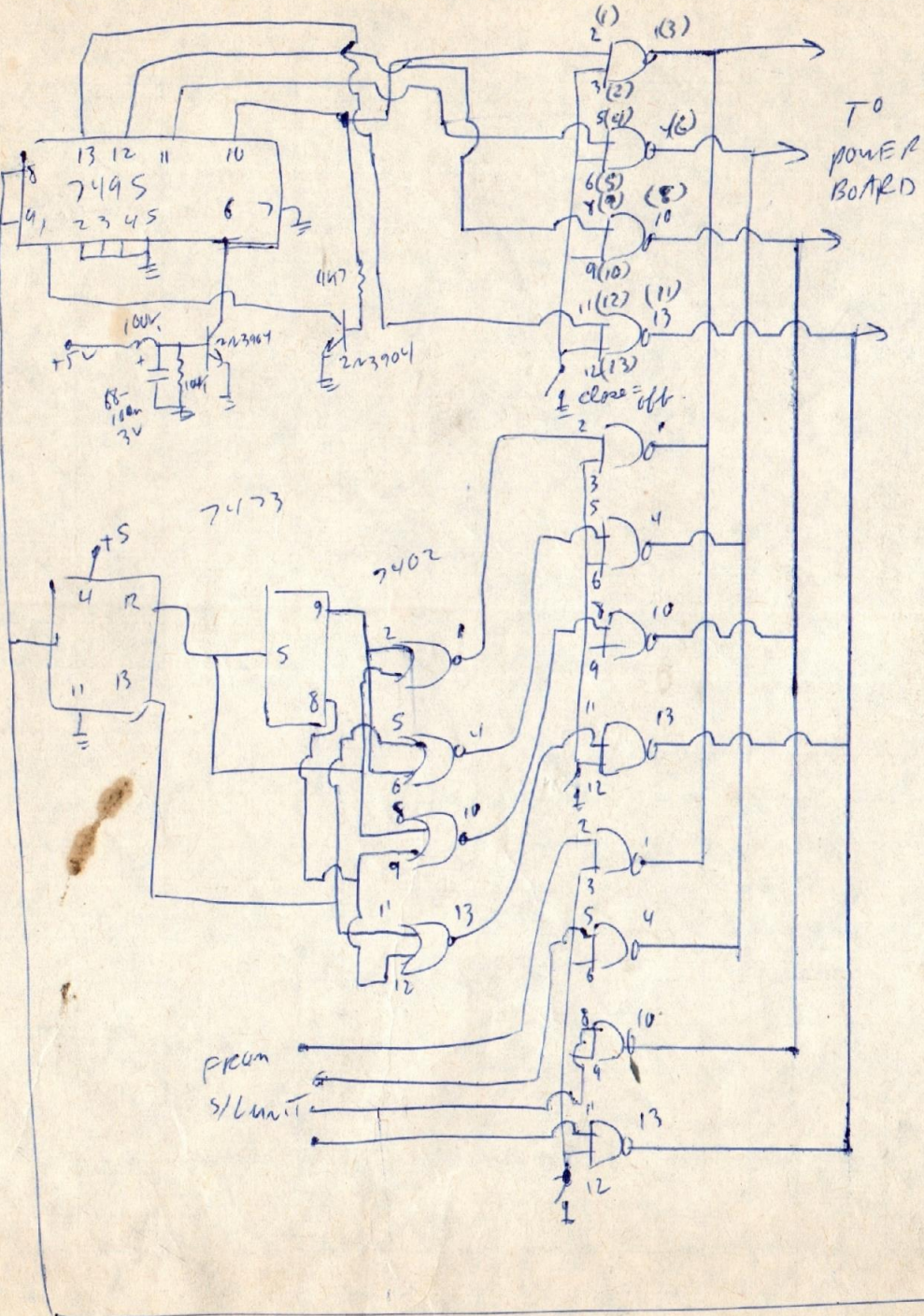


AGC SECTION



June 19/78
D. From

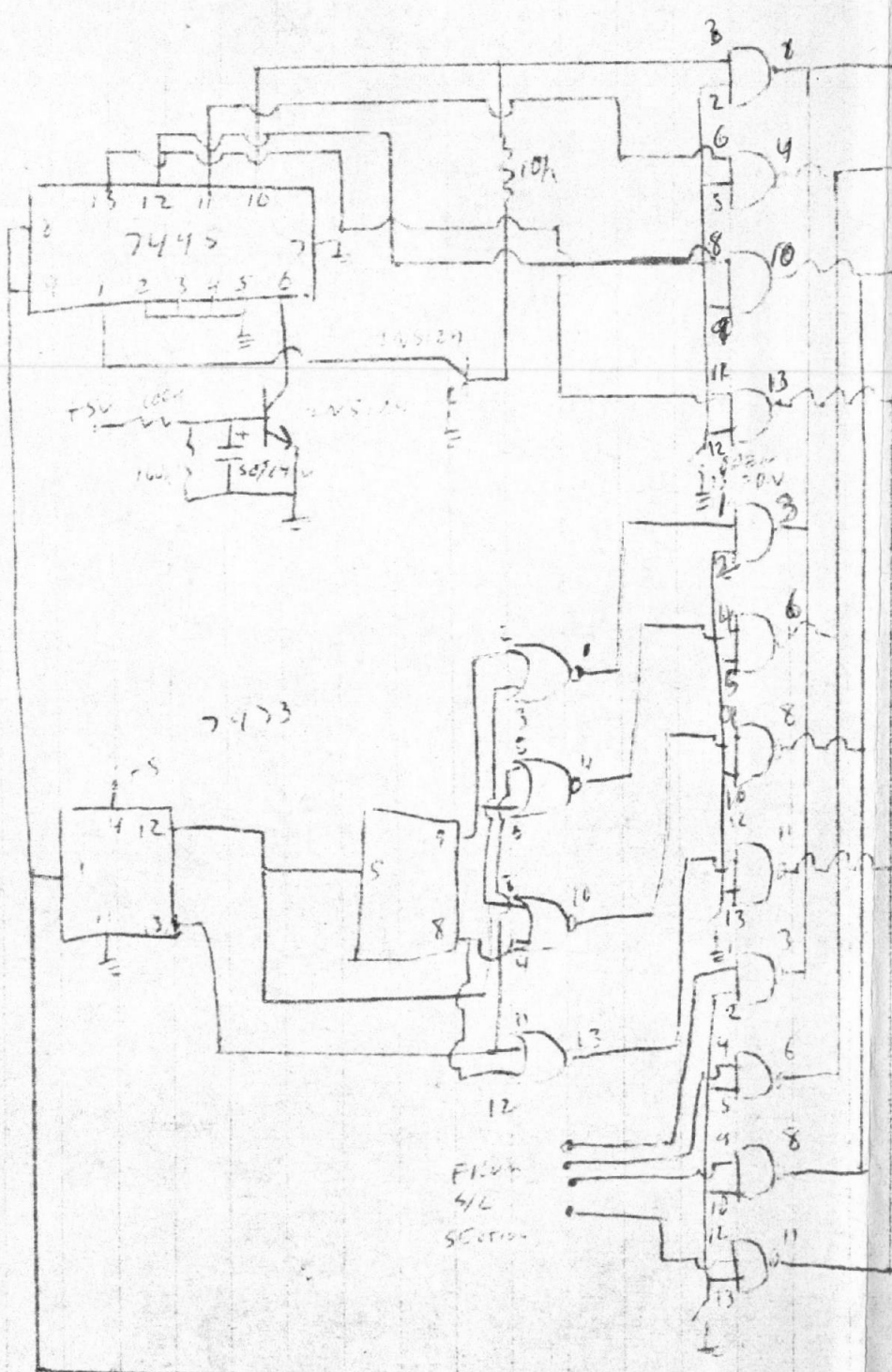
DIGITAL BOARD - 3x7401



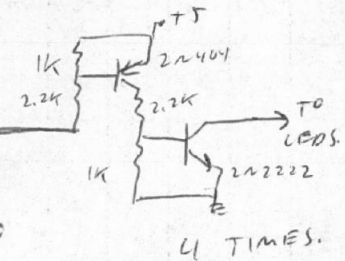
Apr 20/78
D. A. [Signature]

R2A DIGITAL SECTION

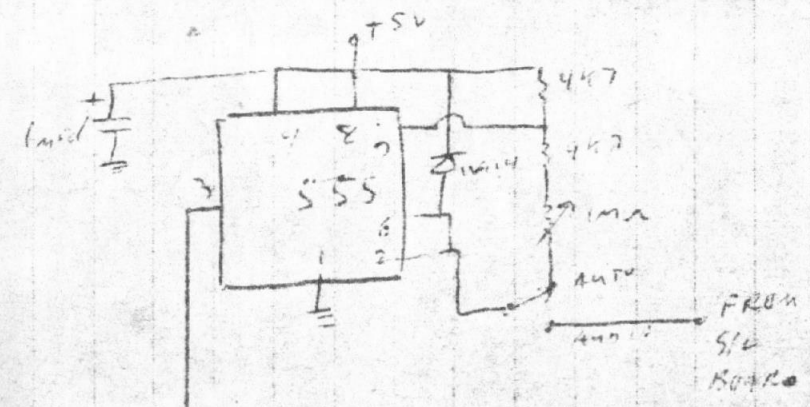
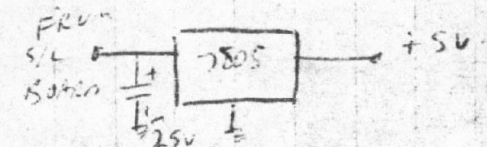
3 x 7401



4x
EASE
OF DESIGN
TIL 222
LED

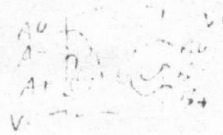
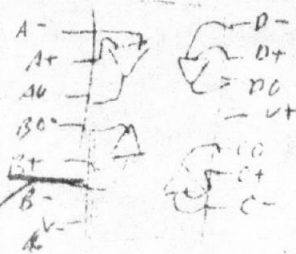
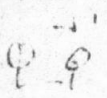


June 19/78
D. Fourn

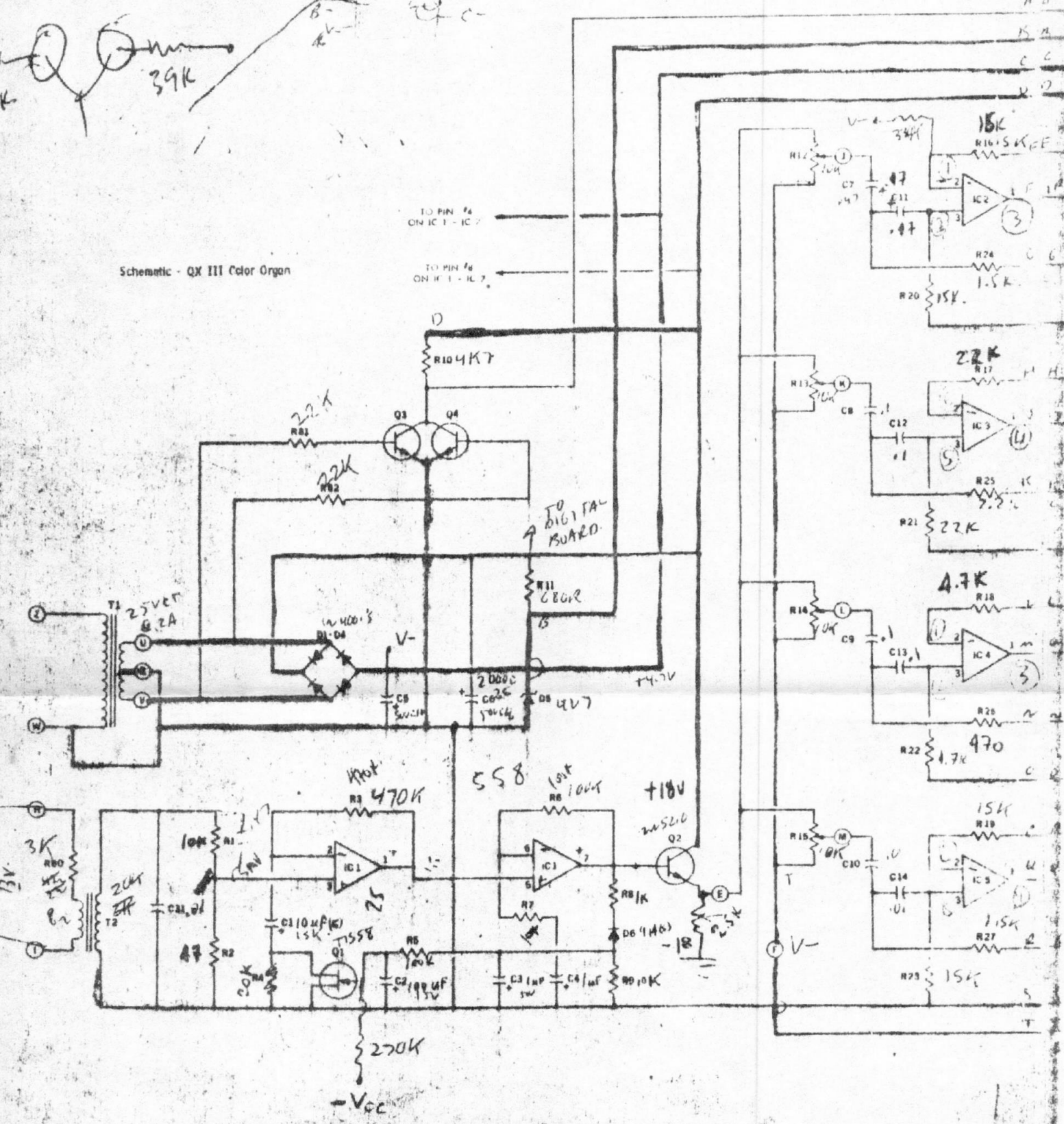


4136 TOP VIEW

558 TOP VIEW



Schematic - QX III Color Organ



A 1
K 2
C 3
V 4
A 5
H 6
C 7
C 8
C 9
C 10
C 11
C 12
C 13
C 14
S 15
T 16

R2C

R2B

WIRE #	FROM	TO	LENGTH	GA	#
1	P1-1	CLIFF -	14"	26	7'
2	-2	" +	14"	"	7'
3	P2-1	AUTO/STUD - PIN 1	13.5" (14")	"	11"
4	P2-2	" - PIN 2	13.5" "	"	11"
5	-3	POT - PIN 2	14"	"	14.5" 15"
6	P3-1	ROT SW - 1	12"	"	74"
7	-2	" " - W	12"	"	"
8	-3	" - 4	12"	"	"
9	-4	" - 5	12"	"	"
10	-5	" - 2	12"	"	"
11	-6	" - 3	12"	"	"
12	P4-1	LED PCB - 4	14"	"	7"
13	-2	" - 43	14"	"	7"
14	-3	" - 21	14"	"	7"
15	-4	" - 2	14"	"	7"
16	-5	" - COM +	14"	"	7"
17	-6	BRT DIM/SW - 2	8"	"	7"
18	P5-1	P7-6	8"	"	44"
19	-2	" - 5	8"	"	14"
20	-3	" - 3	8"	"	"
21	-4	" - 4	8"	"	"
22	-5	" - 2	8"	"	"
23	P6-1	PWR XFMR	9"	"	4"
24	-2	" " CT	9"	"	"
25	-3	" "	9"	"	4"
26	PWR BO -1	JONES PLUG 8	5 1/2" - 6"	18 GA	4'
27	-2	6	5 1/2" - 6"	"	4'
28	-3	4	10"	"	4'
29	-4	2	10"	"	4'
30	-5	PWR STUD XFMR PRI	14 GA DIRECT CONNECTION		

WIRE #	FRM		TO	L	GA.	
31	PWR BD	C	FUSE SIDE	-10"	14 GA	9.5'
32	POT 3	TO	AUTO/AUDIO SW	3 - 4.5"	26 GA	STRIP END - .35"
33	4 LED BD +	-	1 LED BD +	-6.5"	"	
34	1 LED BD +	-	POT SW 1	-6"	"	
35	1 " " -	-	POT SW 4	-6"	"	
36	ART/DIM - 1	-	1 LED BD -	-6"	"	STRIP END - .35"
37	JONES 7	-	GRD	3.5"	14 GA	
38	PWR SW	-	FUSE END	2"	14 GA	

10 -	14"	26 GA	8-7"
6 -	12"	"	2-11"
6 -	8"	26 GA	1-15"
3 -	9"	26 GA	11-14"
8 -	5 1/2 - 6"	16 GA	2-4" <i>in some</i>
2	10"	16 GA	4-4" - 16 GA
1	10"	14 GA	1-9.5" - 14 GA
4	6-6.5"	26 GA	
1	3.5"	14 GA	
1	2"	14 GA	
1	4.5"	26 GA	

