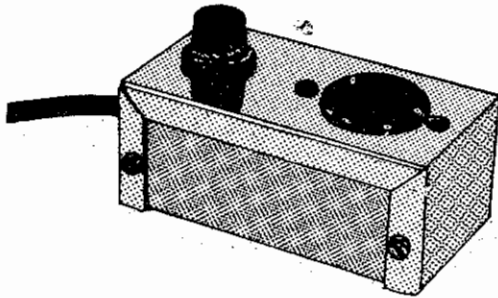
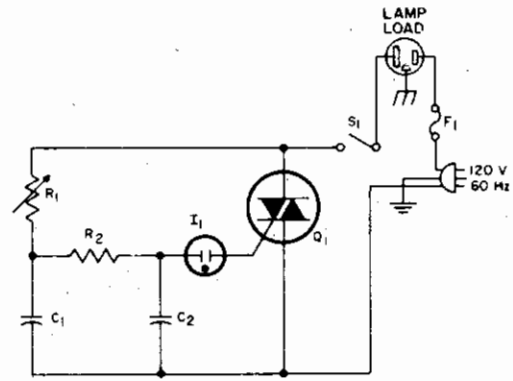


LAMP DIMMER CIRCUIT

The lamp-dimmer circuit provides continuous control of loads up to 700 watts. With it, incandescent lamps can be set at any level up to their maximum brightness.



A suggested enclosure for the lamp-dimmer circuit.

PARTS LIST

C ₁ , C ₂	0.068 mfd. ± 10%, 200 volts
F ₁	Fuse, size suitable to load
I ₁	Type NE83 Neon Lamp
Q ₁	Elcom STR206 Triac used with Elcom 7277151 Heat Sink
R ₁	50,000 ohm, 2 watt, linear taper Potentiometer
R ₂	15,000 ohm, 1/2 watt, 10% resistor
S ₁	120 volt, 10 ampere S.P.S.T. Switch