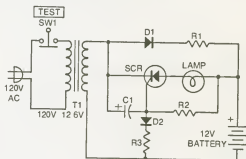


- Parts list
- |                                   |                                |
|-----------------------------------|--------------------------------|
| SCR1—HEP R1245                    | R1—250kΩ, 1/2W, pot            |
| D1, D2, D3, D4—HEP R0056          | R2—1kΩ, 1/2W                   |
| D5, D6—15V, 1/2W Zener, HEP Z0418 | F1—3A, Lafayette 12P29129      |
| C1—0.1μF                          | Fuse holder—Lafayette 12P23510 |
|                                   | LP1—Incandescent up to 150W    |

Fig. 24-12. Full-wave incandescent light dimmer.



- PARTS LIST
- |  |     |
|--|-----|
| D1 GE A15F or equivalent 3A, 50V   | SCR |
| D2 1N4000, 1A, 50V   |     |
| SCR GE C106F1, IR 106F1 or equivalent  |     |
| R1 2 ohm, 2 watt   |     |
| R2 1K, 1/2 watt  |     |
| R3 100Ω, 1/2W  |     |
| C1 100μF, 25V electrolytic   |     |
| Battery 10 to 30 ampere-hour, lead acid (motorcycle or garden tractor battery) |     |
| Lamp 1 to 2A, 12V automotive bulb or high intensity lamp bulb                  |     |
| T1: 120V to 12.6V, 2A filament or rectifier transformer                        |     |
| SW1. SPST pushbutton, normally closed  |     |
| Misc. Oversized battery case, line cord, lamp socket to fit                    |     |

Fig. 24-13. Basic emergency lighting system schematic and parts list.