

LIGHTING CONTROL MODIFICATIONS

SOME readers may find that the circuit used in the "Lighting Control Unit" (July 1973 issue) is not entirely suited to some salvaged components. In particular the transistor TR1.

If a silicon device is used in this position there is a danger of base-emitter breakdown due to reverse bias and this indeed occurred with two BC169C's used in the writer's circuit.

The insertion of protection diodes in the base leads has served to cure the problem quite easily and readily available OA81 devices were used. Equally, OA71 could be used.

A further modification to this useful circuit, shown in Fig. 1, is to include two controls for the original VR1 so as to obtain greater control over some of the effects.

J. Adams,
Oxford.

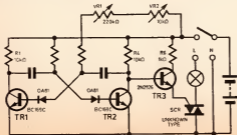


Fig. 1.