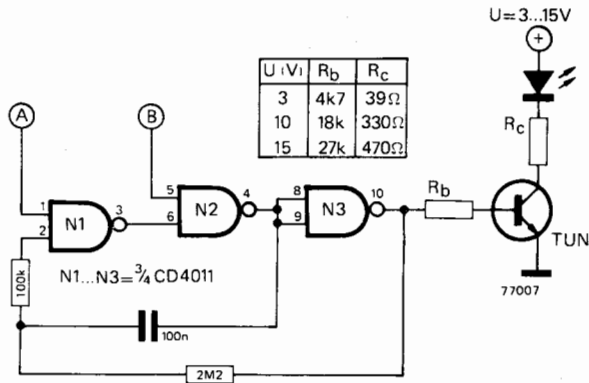


68

LED logic flasher



The condition of the LED is determined by the logic states of the two inputs A and B. If A is low and B is high then the LED will be lit continuously. If B is low then the LED will be extinguished, irrespective of the state of A. If A and B are both high then the astable multivibrator comprising N1, N2 and

N3 will start to oscillate and the LED will flash at about 3.5 Hz. Component values are given for supply voltages of 3, 10 and 15 V. At the maximum supply voltage of 15 V the current consumption is less than 25 mA. Source: RCA CMOS Application and design ideas.