

OPERATIONAL GUIDE

Installing the DMX-3191D SCSI card

1. Power down the host computer and all peripherals.
2. Remove the Cover of the Host Computer.
3. Insert the DMX03191d SCSI card.
4. Close the Cover.
5. Go to next section for driver installing.

WINXP Driver installation

Once the card is installed and the computer is restarted, Windows will detect the board and attempt to load the drivers for it.

Step (1)

Windows will detect a "SCSI Controller".

Select "Install from a list or specific location." Click "Next."



Step (2):

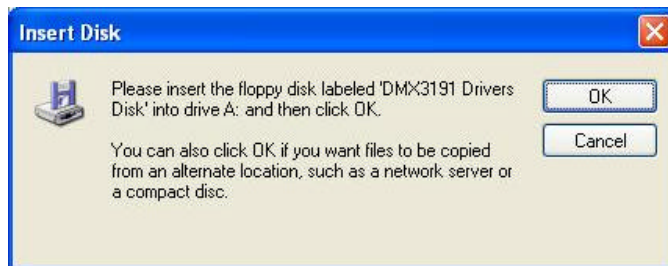
Select "Include this location in the search". Click on the "Browse" button. Navigate to the folder that contains the dmx-3191d drivers.



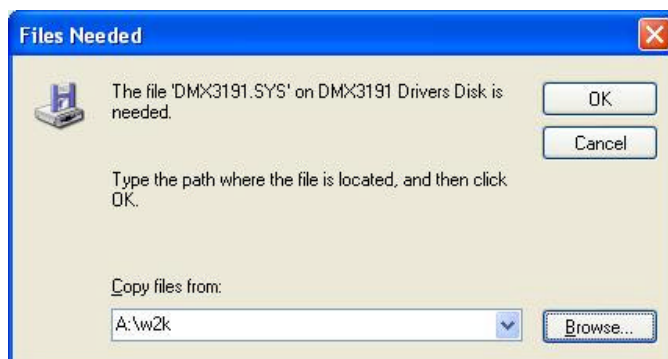
Step (3):
Click on the “Continue Anyway” button.



Step (4):
Please insert the floppy disk labeled “DMX3191 Drivers Disk “into drive A:
And then click OK



Step (5):
Click on the “Browse” button.
Navigate to the folder that contains the dmx-3191d drivers.
Click “Next” .



Step (6):

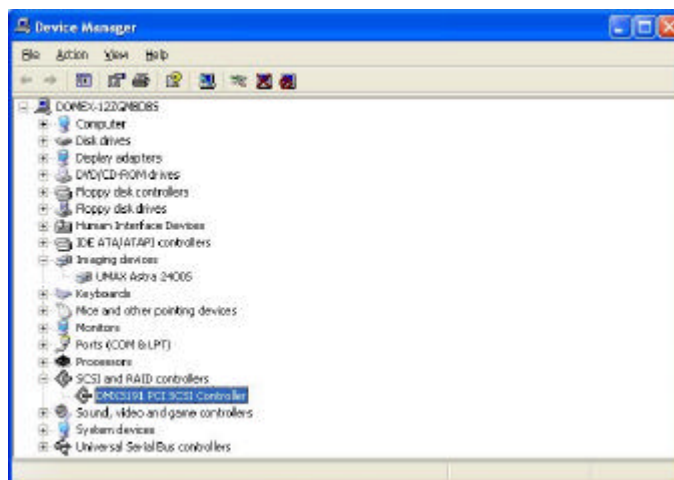
The “Window has finished installing the software that your new hardware device requires” dialog appears. Click “Finish.”



Step (7):

Check your Windows System/Device Manager to confirm proper installation of SCSI and RAID controllers:

DMX3191 PCI SCSI Controllers



Step (8):
Test scanner function (UMAX Astra 2400s).
Test PASS.

