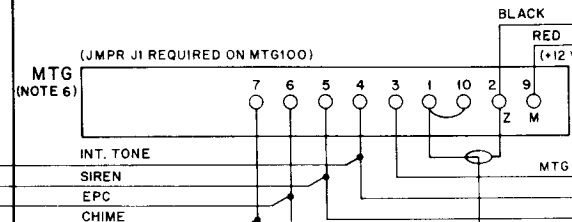


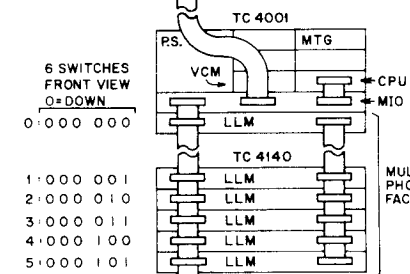
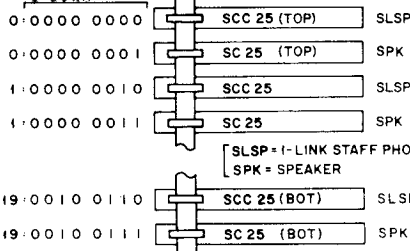
TC 4001 (REAR VIEW)

EXTERNAL TONE
ACTIVATE
(OPTIONAL)



DIP SWITCH SETTINGS (NOTE 4)

MOD. SETTING
8 SWITCHES
0=DOWN

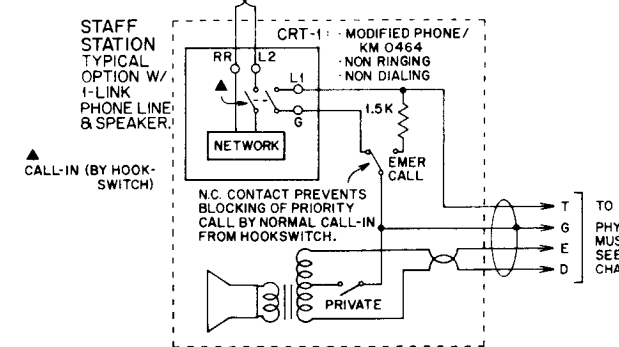
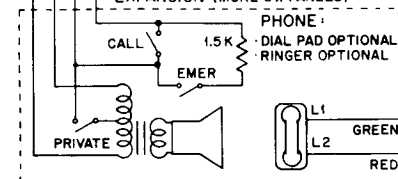
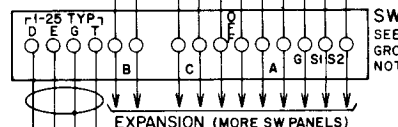
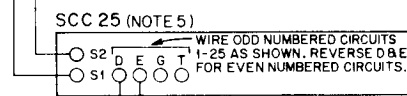
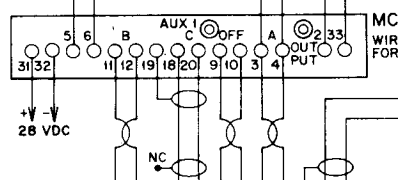
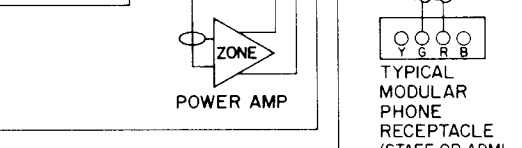
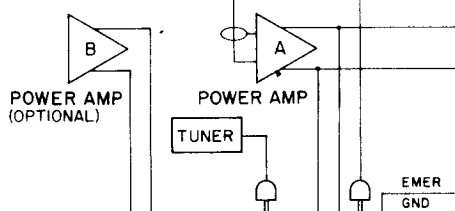
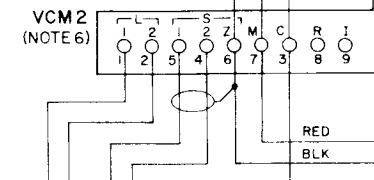
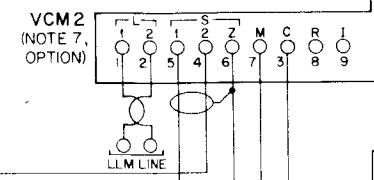
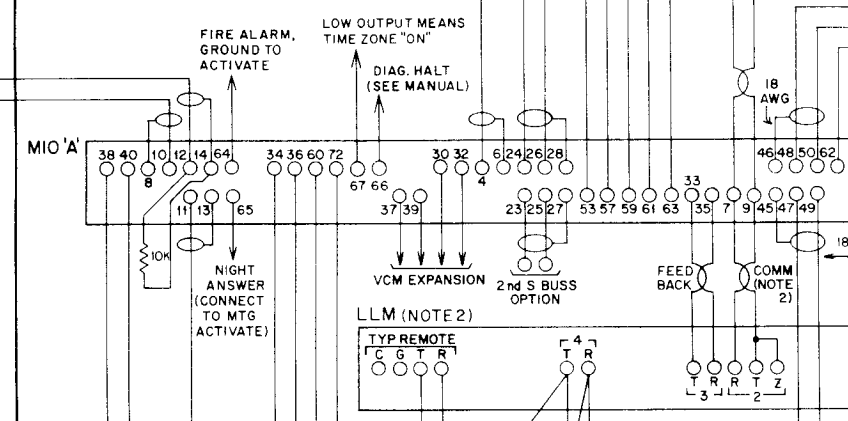


MAX. ALLOW. CABLE LENGTH IS 54 IN.

| MNEMONIC | MODEL | SCHEMATIC |
|------------|--------|-----------|
| VFD | TC4200 | KC1476 |
| LCD | TC4210 | KC1464 |
| TM432 | TM432 | KC1474 |
| SC25 | TC4110 | KC1463 |
| SCC25 | TC4120 | KC1463 |
| MTG | MTG100 | KC1309 |
| * CPU | | KC1459 |
| * MIO | | KC1461 |
| * VCM2 | TC4160 | KC1472 |
| * LLM | TC4150 | KC1431 |
| * PWR SPLY | | KM0691 |

* USED IN TC4001

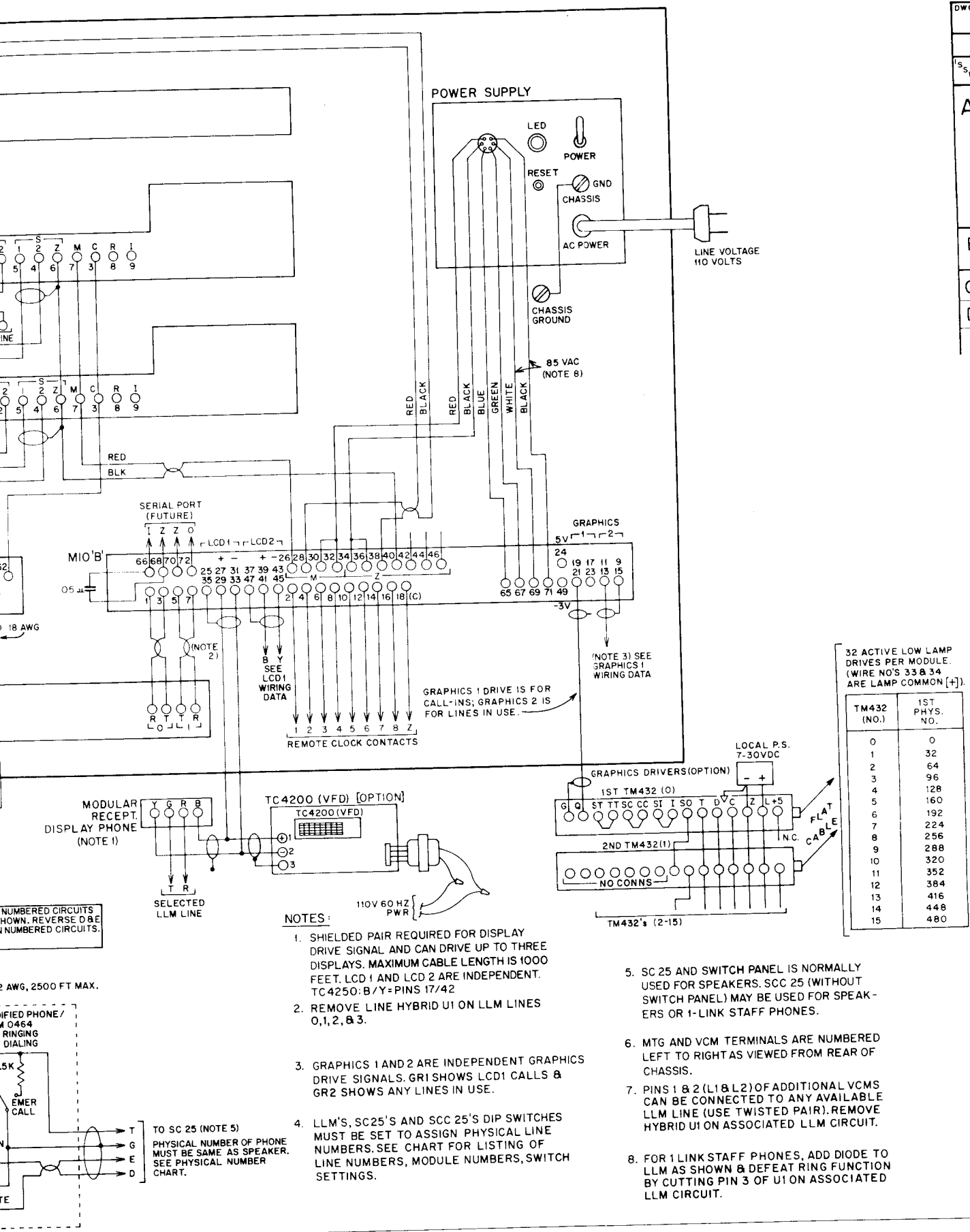
CPU
MOVE JUMPER FROM "DIS" TO "EN"
BEFORE DOING PROGRAMMING.



TO LLM.
PHYSICAL NUMBER MUST
SAME AS SPEAKER. SEE CHART.

TO SC 2
PHYSICAL
MUST BE
SEE PHY
CHART.

| | |
|----------|--|
| DWG. NO. | KM0674 |
| DATE | 11-15-84 |
| ISSUE | CHANGE |
| A | ADDED FIRE ALARM, TIME ZONE, IN4744A, "EPC" WAS "STEADY." "C" ON VCM2 WAS "NO SPEAKER." DELETED CONNECTION BETWEEN ST ON 1ST TM432 & 2ND TM432. WIRE NOS. 1&2 OF LAMP COMMON WERE 33 & 34. CHANGED NOTES 2, 3, 7 & 8. 85 VAC WAS 100V. WIRE NOS. 33 & 34 WERE 1 & 2. ADDED PIN 66 (DIAG. HALT) TO MIO 'A'. 2-4-86. |
| B | ADDED 10K RES BETWEEN A12 & A14, AND 10K RES BETWEEN B66 & B68. 5-2-86 |
| C | CONNECTED Z TO T ON LLM CONNECTOR. 7-3-86 |
| D | 05 uF CAP BETWEEN MIO 'B' 66 AND 68. 3-11-87 |

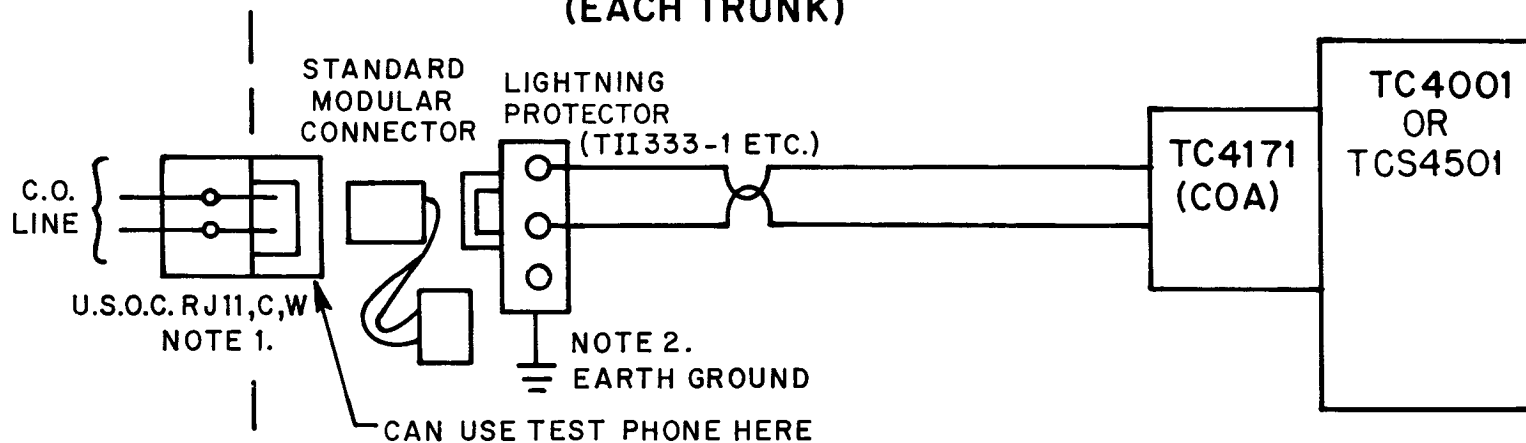


32 ACTIVE LOW LAMP DRIVES PER MODULE. (WIRE NO'S 33 & 34 ARE LAMP COMMON [+]).

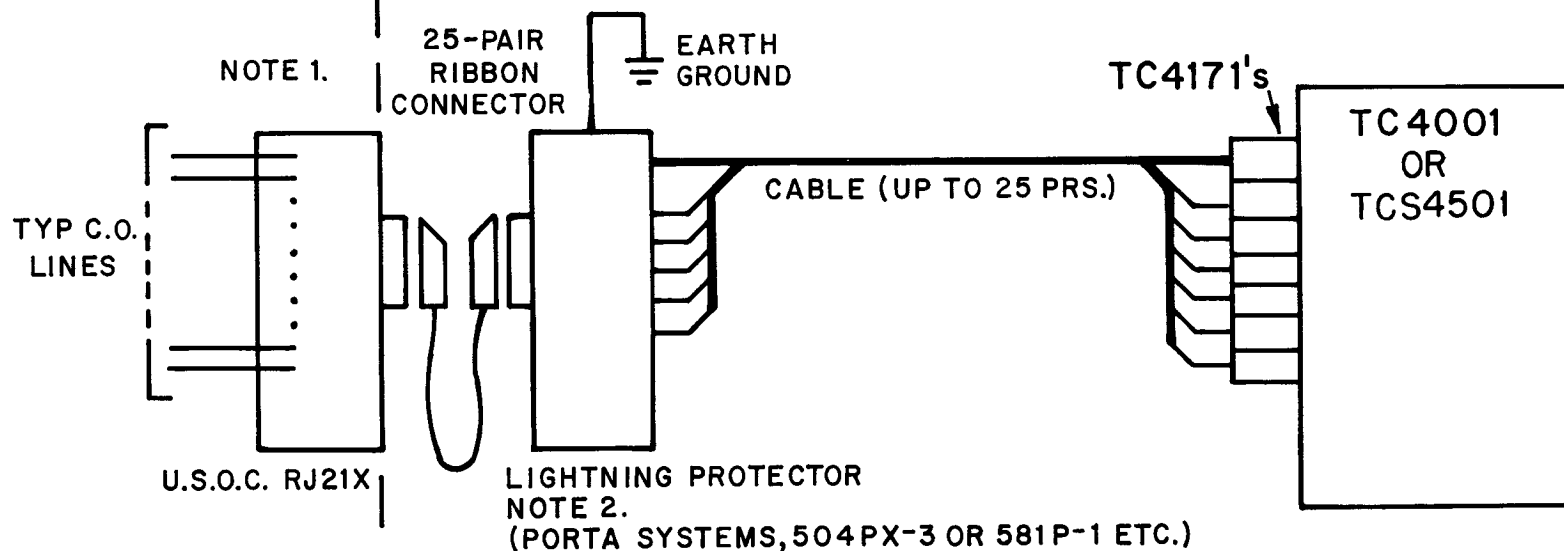
| TM432 (NO.) | 1ST PHYS. NO. |
|-------------|---------------|
| 0 | 0 |
| 1 | 32 |
| 2 | 64 |
| 3 | 96 |
| 4 | 128 |
| 5 | 160 |
| 6 | 192 |
| 7 | 224 |
| 8 | 256 |
| 9 | 288 |
| 10 | 320 |
| 11 | 352 |
| 12 | 384 |
| 13 | 416 |
| 14 | 448 |
| 15 | 480 |

TELECENTER SYSTEM WIRING
RAULAND-BORG CO.
MADE IN U.S.A.
KM0674 D

TYP. MODULAR ARRANGEMENT (EACH TRUNK)



TYP. MULTI-LINE ARRANGEMENT



NOTES:

1. PHONE COMPANY TO INSTALL U.S.O.C. DEMARCATION JACKS, TYPE RJ11C OR RJ11W FOR EACH SINGLE LINE OR TYPE RJ21X FOR MULTI-LINE PHONE SERVICE.
2. LIGHTNING PROTECTOR LOCATED NEAR WHERE LINES ENTER BUILDING AND WITH A GOOD EARTH GROUND IF LIGHTNING PROTECTOR IS NOT SUPPLIED BY PHONE COMPANY.