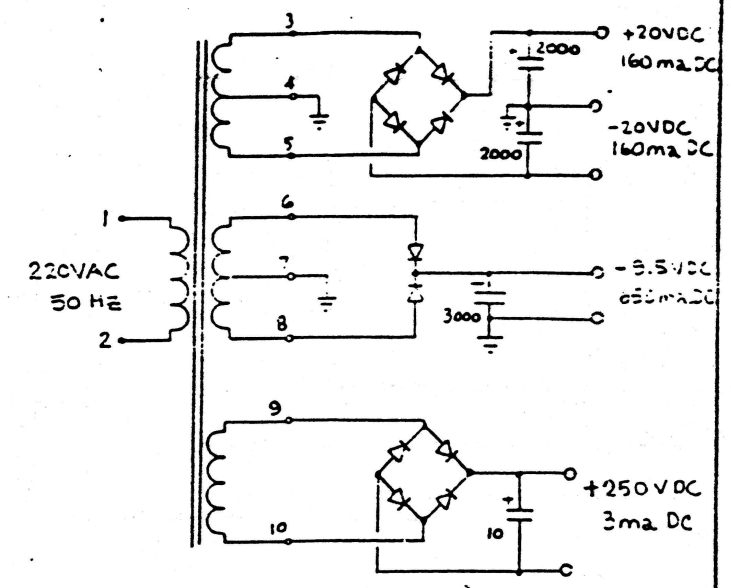
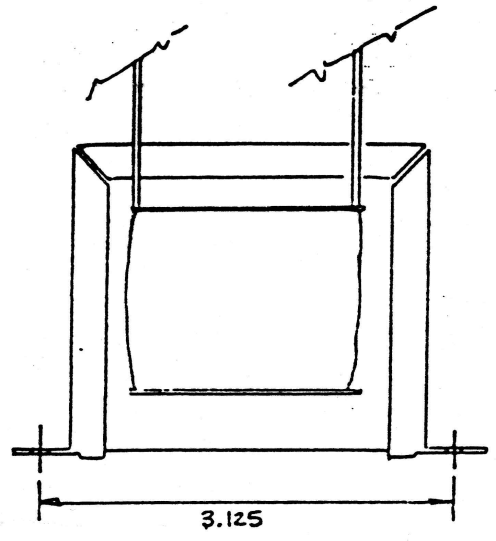
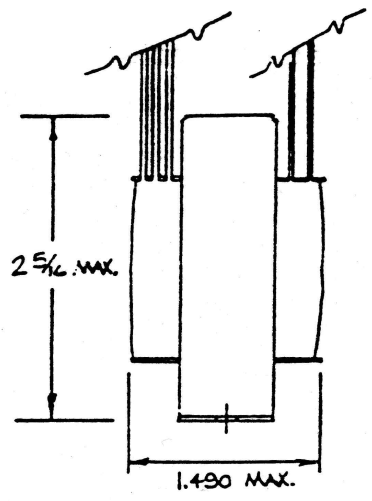


213-944-3023
attn: im



NOTES:

1. ALL DIMENSIONS IN INCHES.
2. 1500 VRMS HIPOT
3. VACUUM IMPREGNATE.
4. EI-87 x $\frac{3}{4}$ "
5. VOLTAGE & CURRENTS IN R.M.S.
6. WIDTH DIMENSION 1.490 INCHES MUST NOT BE EXCEEDED.
7. UL LISTED COMPONENTS.
8. WIRE, UL-1007 OR SIMILAR
9. FRAME SPEC. MOD. WIDTH = $\frac{3}{4}$ ".
10. M-6 LAM

LEAD NO	COLOR	LENGTH	TERMINATION
1	WHITE	4.0	STRIP/TIN .125"
2	BLACK	4.0	"
3	RED	6.5	CUT ONLY
4	YELLOW	6.5	"
5	RED	6.5	"
6	GREEN	6.5	"
7	BLUE	6.5	"
8	GREEN	6.5	"
9	ORANGE	15.75	"
10	GREY	15.75	"

Actual measurement is 3.75"

XFRMR MPI & MBI FOREIGN 220VAC 50HZ EI-87 x $\frac{3}{4}$ (240073)		
SCALE: 1:1	APPROVED BY:	DRAWN BY DJT
DATE:		REVISED 11-10-90
ADA SIGNAL PROCESSORS, INC. 7303 D EDGEWATER DR. OAKLAND, CA 94621		
DRAWING NUMBER BOM		B 509 B