

Notes:

1. S1-1~S1-4: Band selector switch in "FM" position.
2. S2-1~S2-3: Power Source & clock selector switch in "OFF" position.
3. DC voltage measurements are taken with circuit tester (10K Ω /V) from negative terminal of battery.
.....FM position AM position
4. Capital letters (M, K, J, P, C, D) in the circuit diagram show allowable tolerances of resistors and capacitors as follows:

- M=±20% K=±10% J=±5% P=+100% C=±0.25PF
D=±0.5PF
5. Battery Current: No Signal.....FM & AM 20mA
Maximum Output...FM & AM 55mA
6. PF=pico farad=mmf
 μ F=micro farad=mfd
7. All resistor values in ohms (K=1000 Ω).
8. All capacitor values in micro farads (P=mmf).

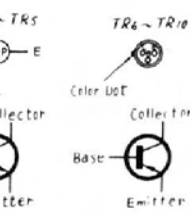
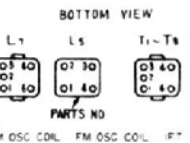
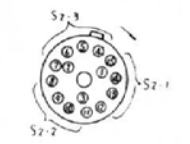
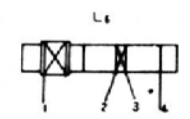
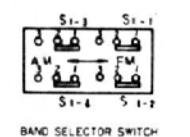


Fig. 5-16. Panasonic Model 7878 AM-FM portable radio. (Courtesy Matsushita Electric Corp. of America)