

The Art of Dynamics: From a Purr to a Roar

written for the March Issue of EQ Magazine

©1998 by Eddie Ciletti

Studies of ancient cave paintings reveal that dynamics processing existed even in prehistoric times. One series of paintings shows a man and a child in close proximity to a lion. With hand stretched out, the child is ready to apply affection, but, just as the parent says "nice kitty," the parent quickly plucks the toddler from danger. After the chase, our ancestors are physically safe, within earshot of the great cat. As the lion roars, both man and child have hands securely placed over their ears, effectively acting as a limiter, with an infinite-to-one ratio and threshold set to 50 dB SPL. Tests are now underway to determine the unprocessed dynamic range of the lion, from a purr to a roar.

In more recent times, rodeo-style gain riding began with the ear as detector, the hand as control device and the voice as the attenuator...

THE CLASSICS

This month's exploration into the blood and guts of dynamics processors begins with two classic cousins — the Telefunken LA-2A (Figure 1) and the Universal Audio LA-3A. Since both of these "Leveling Amplifiers" rely on the same optical leveling circuit, their response to dynamic challenges is nearly identical. Some of the sonic differences can be attributed to the implementation: vacuum tubes in the LA-2A, transistors in the LA-3A. "Reproductions" of the LA-2A, most notably the ADL 1000 and ADL 1500, use the same exact circuitry yet sound different. This is primarily due to the choice of input and output transformers. Different transformer core materials and buss homogenization.

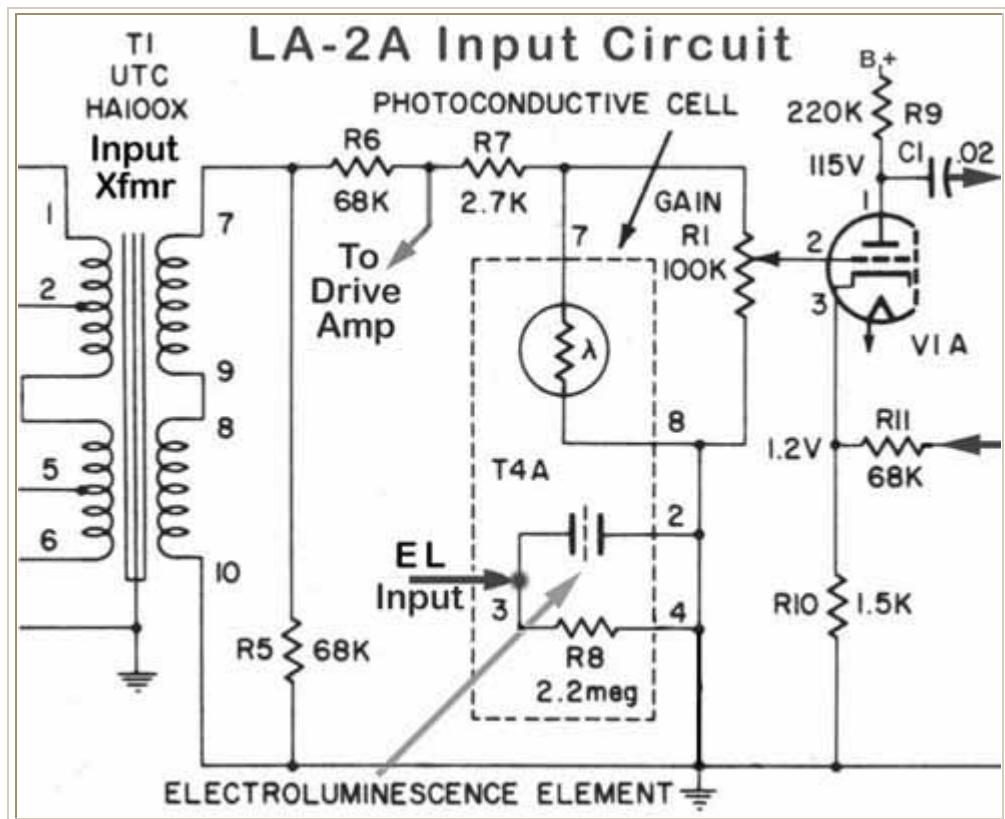
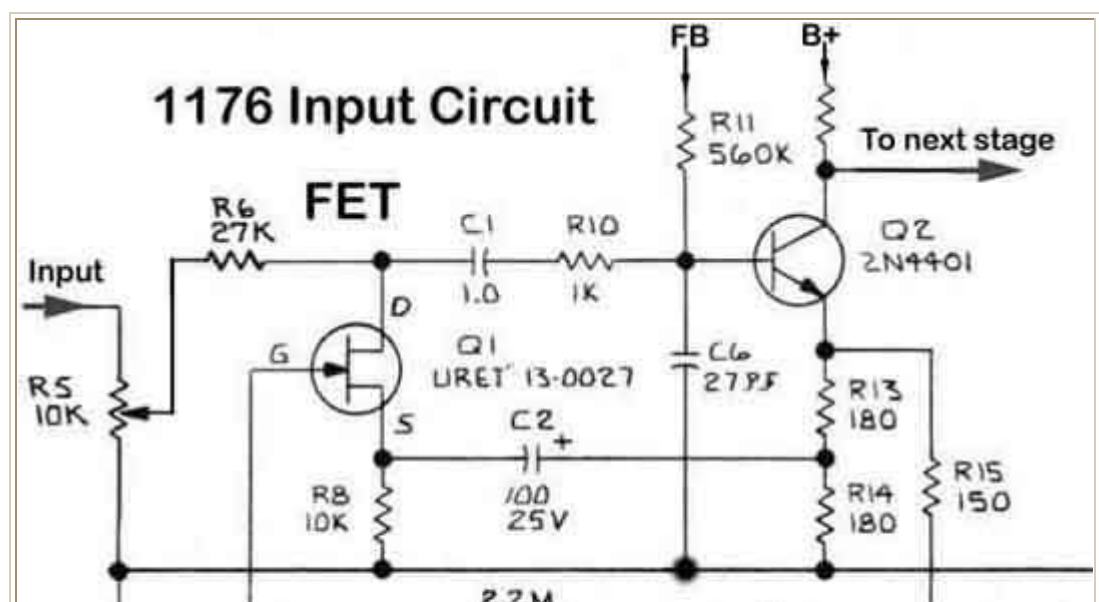


Figure 1

FET CHANCE

Of course there are many ways to dynamically skin a cat. (Any connection with the opening paragraph is "purr" cc Classics like the UREI 1176 (Figure 2) and the Audio Designs Compex-Limiter, along with the more modern E Distressor, all use the Field Effect Transistor (FET). In the early seventies, **dbx** designed and built a transistorized Controlled Amplifier (VCA) as the gain manipulating device for their compressor/limiters. The VCA also played a noise reduction system.



**Figure 2**

AND THEN THERE WAS LIGHT

An optical attenuator is essentially a light-sensitive volume control. In the mechanical version, the knob (a.k.a. the knob) is connected to a wiper which "divides" one resistor into two parts — two resistors of equal value yield an output voltage half the input. Are ya ready? Let's go into the light...

A photo-resistor changes its value with light: high when dark, low when bright. The filament in an incandescent lamp has thermal transients, with a delayed "release" that's too long to be useful. Photo-resistor response varies, but most have a "medium-fast" attack and a non-linear release that's initially fast, then slow. Achieving the desired characteristics requires grading.

A LIGHT LUNCH

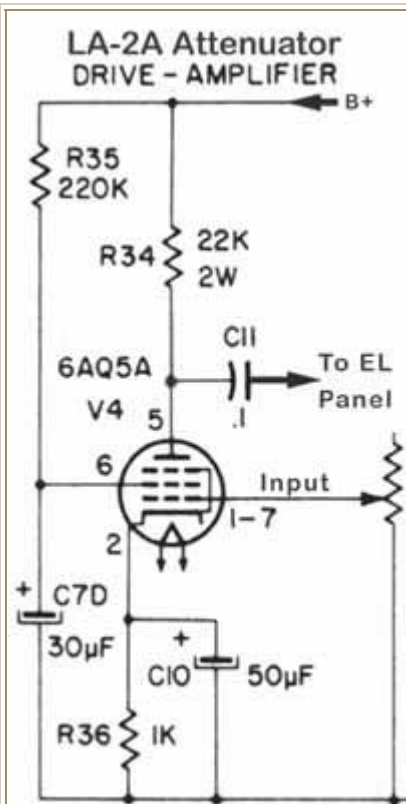
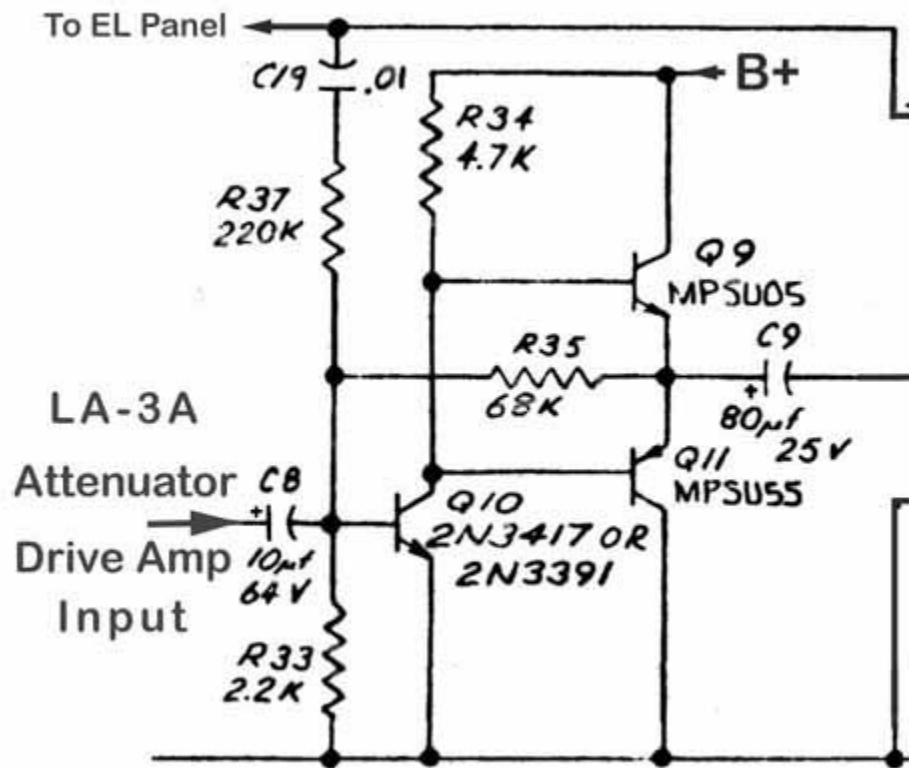
For speed, an LED light source might be the choice now, but the early sixties predate their birth. Neon bulbs have been used, but these devices are not linear. The answer came from technology employed by the aviation industry called "The Electro-Luminescent Panel." A high impedance device, the "EL" consists of a capacitor sandwich sealed in a clear plastic (hold the mayo).

EL panels can be made into all sorts of shapes, a trait particularly well-suited for illuminating aircraft instrument panels and "Warning" indicators on planes — because they don't burn out. Available in a variety of colors (photo-resistors are currently used to back-light the LCD displays used in laptops and other fine electronic toys).

OK, LET'S SPLIT

After a signal enters any dynamics processor, it splits in two. One half is routed to the gain manipulating device and the other half off to the "detection" circuitry — each with its own volume control. In the "optical" case, an amplifier drives the EL panel and the brighter the EL, the more attenuation.

Note the variation in drive circuitry between the LA-2 (Figure 3) and the LA-3 (Figure 4). Both are simple transistor circuits. The LA-2 uses a step-up transformer to generate the necessary drive voltage for the EL panel. You can buy the hardware store in the form of a "night lights." And yes, it really does take 120 volts AC to get 'em going!

**Figure 3****Figure 4**

Unlike the optical attenuator, both an FET and a VCA require a more sophisticated "detector" circuit. The audio signal is converted into a corresponding DC voltage and then further manipulated by the more familiar, attack, release, and hold circuitry. Drums and vocals are diverse sonic challenges that require additional detector sophistication. Features like RMS detection make the processor more versatile.

METER MAID

With any dynamics "module" the great question is whether the metering accurately reflects the processing being done. It is noticed that the optical attenuator has at least two photo-resistors, one for gain reduction and one for metering. This can become particularly inconsistent because their photo-resistors will age differently. In addition, when the meter's "0" wanders, check the "voltage regulator," which for this circuit is A NEON BULB!!! Remember I mentioned that the circuit is non-linear? Well, once "fired" it acts like a zener diode, clamping at 65 volts. Neon also degrades with age and is replaced by a zener diode. See Figure 5.

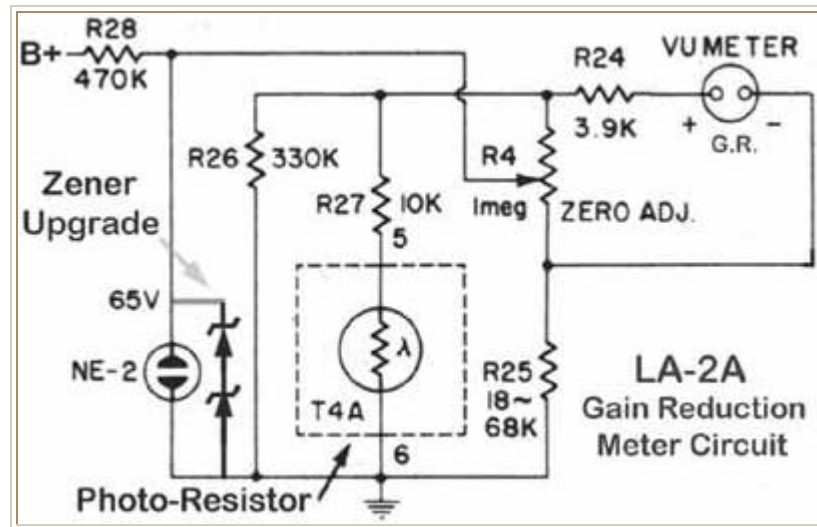


Figure 5

How many engineers does it take to change an optical module? Just one! For a new part — called the T4B — all you have to do is make a phone call to JBL (818-895-3417 or 818-894-8850) and \$160. An alternate source for new (\$145) and rebuilt (ADL 914-256-0032).

BASIC MAINTENANCE AND OPERATIONAL TIPS

Here are three quick LA-3A tips to share. First, pop the lid and spray a little Caig DeOxit™ into the GAIN switch vigorously — then set to 30 dB. Using the 50 dB setting — with a nominal "Plus-Four" source — may overload the transformer, unless you're trying to use the LA-3A as a mic pre!

While the lid is open, check R14. On the schematic, this part is listed as 220-k-ohms. Changing the value to 47-k-ohms will increase the gain and some noise as well. You'll have to run the Input Level at a higher setting, but that's OK.

Like any transformer-based device, the LA-3A was designed to drive a 600-ohm load. Unless you are consistent with using a Pultec, an old Neve console or some equally vintage piece, it is highly advisable that you put a 620-ohm, 1/2-watt load on the output terminals **of all your transformer-based gear!** There will be a sonic difference.

[e-mail eddie](#)

[Go to the TAPE directory](#)

[Go to the Home Page](#)