

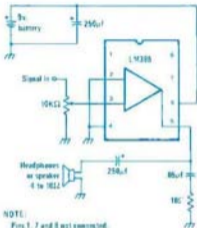
# 11

## Headset amplifier

Have an fm tuner with beautiful sound, but not quite enough *umph* to drive a set of headphones. Well, here's an inexpensive amplifier that will give you that missing *umph*, and sound fidelity that will amaze you.

The circuit uses the common LM386 integrated circuit and a small handful of junkbox parts. The whole thing will easily fit on a one-by-one perboard. Even at high listening levels, a standard nine-volt battery should provide several hours of enjoyment.

The amplifier can be mounted right on your headphones, if you don't mind the weight of the battery and have the space required. You may find it more desirable to put the amplifier and battery into a small box mounted in the headphone cable. Or, if you'd rather not make a permanent installation, output the amplifier through a connect-



tor into which you can plug your headset.

The diagram shown is monaural. If you have stereo, you'll need two amps, one for each channel.