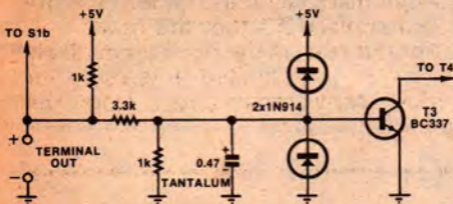


## NOTES & ERRATA, cont.

**COMPUTER TAPE INTERFACE** (April 1977, File No. 2/CC/19): Readers experiencing difficulties in driving the unit with teleprinter rather than an electronic terminal may find it advantageous to change the base drive circuit of T3 so as to give a higher switching threshold.

The recommended circuit is reproduced below:



In some cases it may also be desirable to add a 1k pull-up resistor to the Q-bar output of FF3, to increase the available drive to T4.

**MOVIE MIXER** (September 1978, File No.1/MX/15): The 10k resistors used to convert the linear slider pots into log-law types should be connected from the rotors to ground, not from the rotors to the "top" ends.

**HIGH PERFORMANCE TRAIN CONTROLLER** (File No. 2/MC/16) October 1978. Some readers have expressed difficulty in obtaining the 12V 60/45W auto globe. In such instances a 12V 55W quartz halogen globe (available at auto accessory outlets) can be substituted. The only precaution necessary is to avoid touching the quartz envelope with the fingers.

Alternatively, any combination of 12V globes which add up to around 60W can be used. Typical combinations are three 12V 20W blinker indicator lamps wired in parallel, or two 12V 6/21W stop/tail lamps wired all four filaments in parallel (total 54W).

In all cases, at least one of the globes should be positioned under the 18mm hole in the PCB.