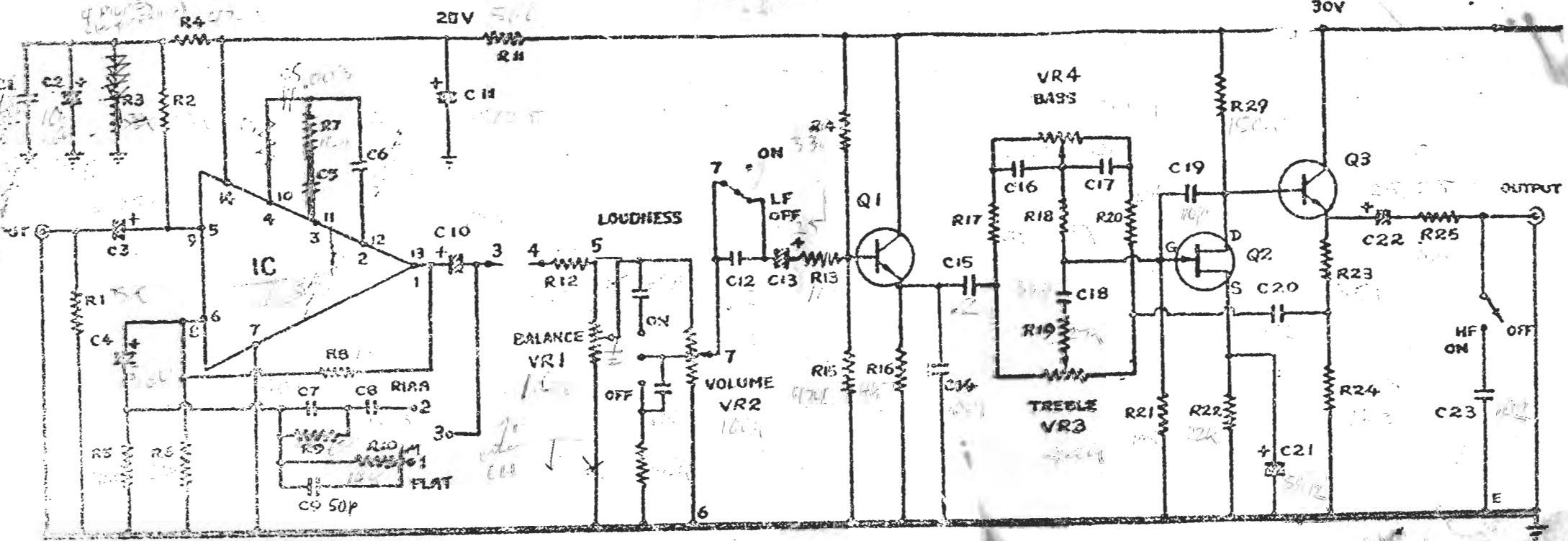
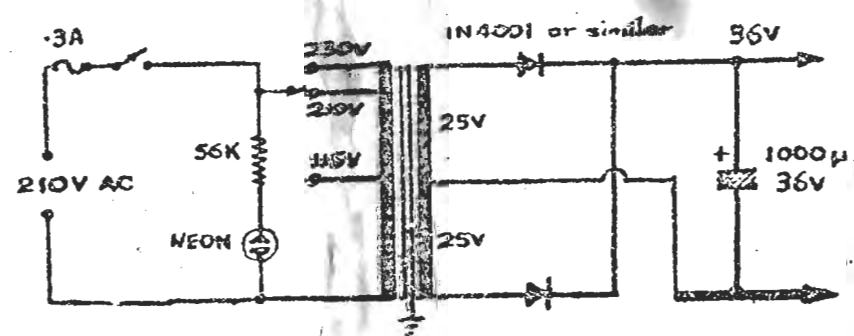


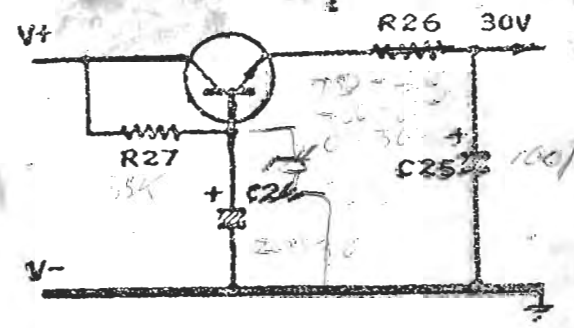
COMPLETE SCHEMATIC DIAGRAM



UNITRONICS
SP175
FET IC
STEREO PREAMP



SUGGESTED POWER SUPPLY UNIT (NOT SUPPLIED IN SP175 KIT)



VOLTAGE REGULATOR

$$R27 = \frac{V_T - V_Z}{I_Z}$$

Unitronics SP175

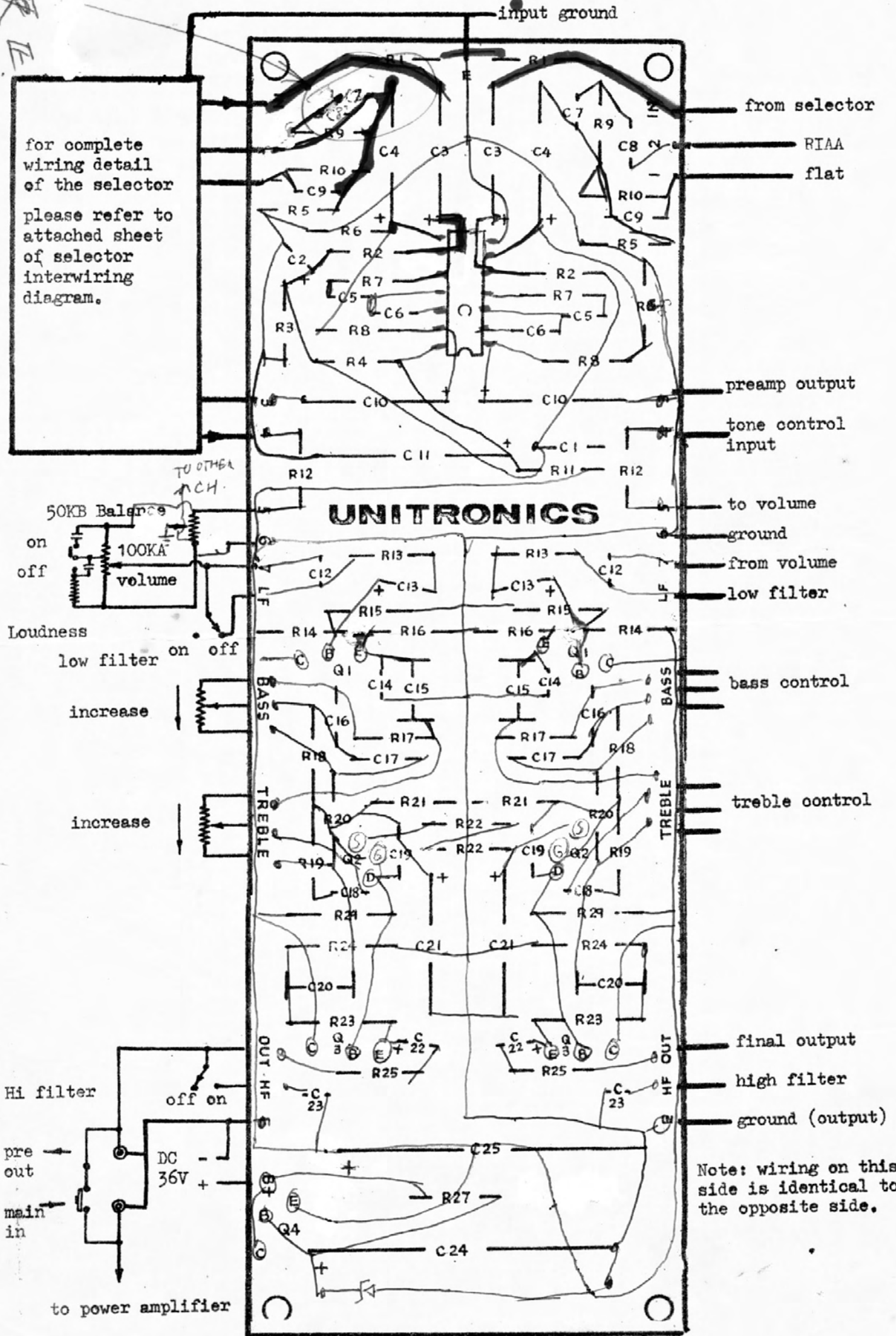
FET IC stereo preamplifier

External wirings, controls and switches:

也須更

for complete wiring detail of the selector

please refer to attached sheet of selector interwiring diagram.



Note: wiring on this side is identical to the opposite side.

Unitronics SP175

FET IC stereo preamplifier

Parts list:

Resistors:

R1	75K
R2	150K
R3	56K
R4	470K
R5	1.2K
R6	270K
R7	40 ohm
R8	1M
R9	82K
R10	100K
R11	560 ohm
R12	3.3K
R13	10K
R14	530K
R15	470K
R16	4.7K
R17	47K
R18	47K
R19	27K
R20	47K
R21	1.5M
R22	22K
R23	3.3K
R24	1.2K
R25	560 ohm
R26	see text
R27	33K
R28	omit
R29	150K

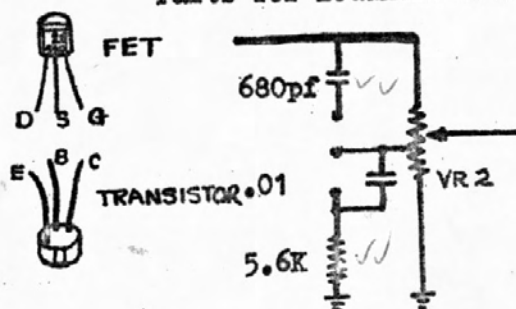
Condensers:

C1	0.1mfd 250V mylar
C2	10mfd 6V
C3	5mfd 25V
C4	5mfd 6V
C5	0.003
C6	0.003
C7	0.001 high precision
C8	0.003 high precision
C9	50pf
C10	5.1 25V
C11	100mfd 25V
C12	0.0001
C13	1mfd 25V
C14	0.001
C15	0.2mfd 250V (2 X 0.1mfd)
C16	0.01mfd 250V mylar
C17	0.01mfd 250V mylar
C18	330pf
C19	10pf
C20	0.2mfd 250V (2 X 0.1mfd)
C21	50mfd 12V
C22	25mfd 25V
C23	0.02
C24	200mfd 36V
C25	100mfd 30V

Control potentiometers:

VR1	50KB Balance control
VR2	100KACT volume control
VR3	500KB treble control
VR4	500KB bass control

Parts for loudness control:



Semiconductor complements:

IC	uA759C Integrated circuit
Q1	2N3770 NPN transistor
Q2	2N5457 N channel FET
Q3	2N4010 NPN transistor
Q4	CS9015 NPN transistor

Note: R26 is for the adjustment of supply voltage, the circuit itself operates on 36V, when the input voltage to the built in power regulator is 36V, R26 is omitted and a jumper wire across its place, when the supply voltage raises to 50V, R26 should be 720 ohm. and 760 ohm when the DC input is at 60V.

++++++ B O N U S C O U P O N ++++++

The bearer of this coupon is entitled to purchase one unit of the 6 position push button selector switch assembly together with the printed circuit board-wirings specially made for the Unitronics SP175 FET IC pre amplifier at HK\$12.00 per set (original price HK\$18.00 per set).

Unitronics SP175

FET IC stereo preamplifier

Parts list:

Resistors:

R1	75K
R2	150K
R3	56K
R4	470K
R5	1.2K
R6	270K
R7	10 ohm
R8	1M
R9	82K
R10	100K
R11	560 ohm
R12	3.3K
R13	10K
R14	330K
R15	470K
R16	4.7K
R17	47K
R18	47K
R19	27K
R20	47K
R21	1.5M
R22	22K
R23	3.3K
R24	1.2K
R25	360 ohm
R26	see text USE A 1K TRIMMER
R27	33K
R28	omit
R29	150K

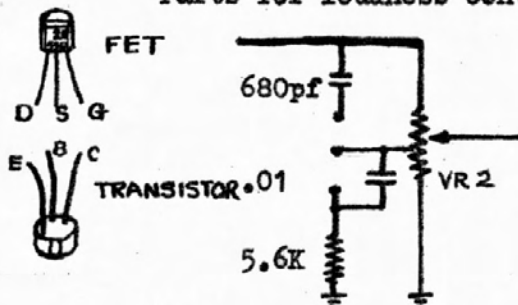
Condensers:

C1	0.1mfd 250V mylar
C2	10mfd 6V
C3	5mfd 25V
C4	5mfd 6V
C5	0.005
C6	0.005
C7	0.001 high precision
C8	0.003 high precision
C9	50pf
C10	5mfd 25V
C11	100mfd 25V
C12	0.02mfd
C13	1mfd 25V
C14	0.001
C15	0.2mfd 250V (2 X 0.1mfd)
C16	0.01mfd 250V mylar
C17	0.01mfd 250V mylar
C18	330pf
C19	10pf
C20	0.2mfd 250V (2 X 0.1mfd)
C21	50mfd 12V
C22	25mfd 25V
C23	0.02
C24	200mfd 36V
C25	100mfd 36V

Control potentiometers:

VR1	50KB Balance control
VR2	100KACT volume control
VR3	500KB treble control
VR4	500KB bass control

Parts for loudness control:

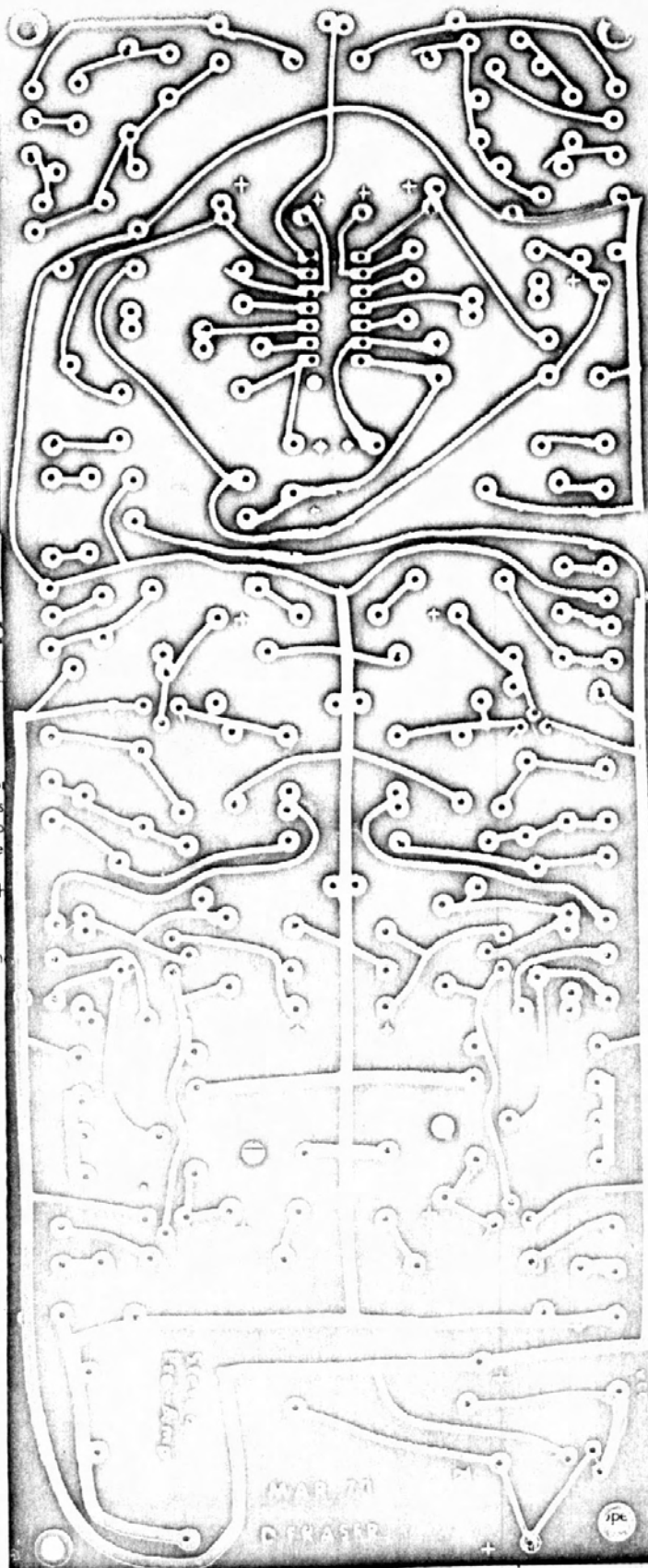


Semiconductor complements:

IC	ua739C Integrated circuit 8765.017
Q1	SE4010 NPN transistor
Q2	2N5457 N channel FET
Q3	SE4010 NPN transistor
Q4	CS9013 NPN transistor

MPS 6520
INSTAL

Note: R26 is for the adjustment of supply voltage, the circuit itself operates on 36V, when the input voltage to the built in power regulator is 36V, R26 is omitted and a jumper wire across its place, when the supply voltage raises to 50V, R26 should be 720 ohm. and 760 ohm when the DC input is at 60V.



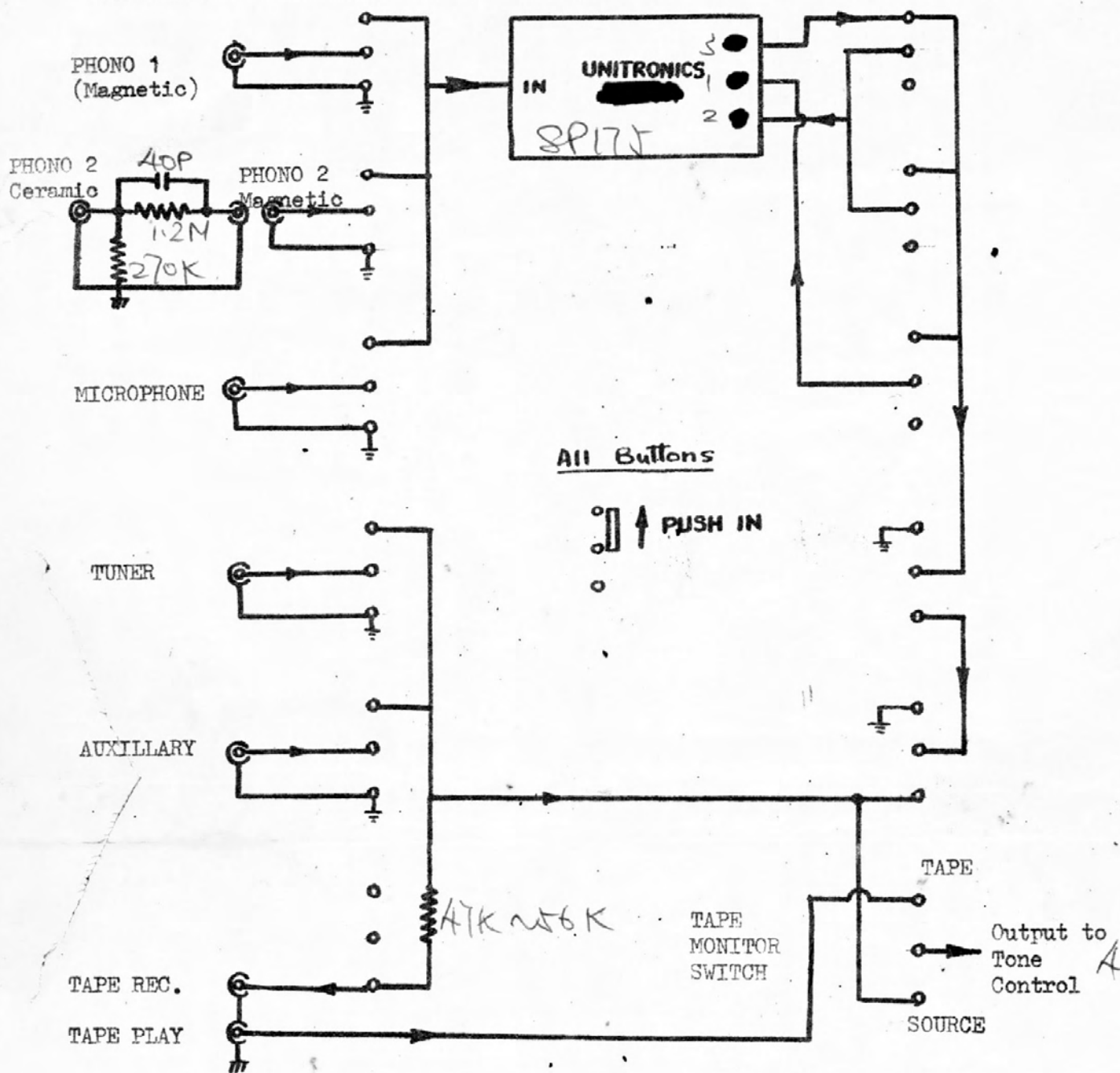
McGraw-Hill
ELECTRONIC
SERIES

MAR 70
P. FRASER

IPC

INTERWIRING DIAGRAMS FOR PUSH-BUTTON TYPE SELECTOR SWITCHES

Suitable for Unitronics UA350A, UA150A; also suitable for UA350 with slight modification



The above diagram is the general circuit used for Unitronics amplifiers, they can be adjusted to suit particular needs with change in circuitary.

Designed and drawn for Unitronics
 Copyright October 1969, Ying Kwong Electronics & Models Co. Inc.

