

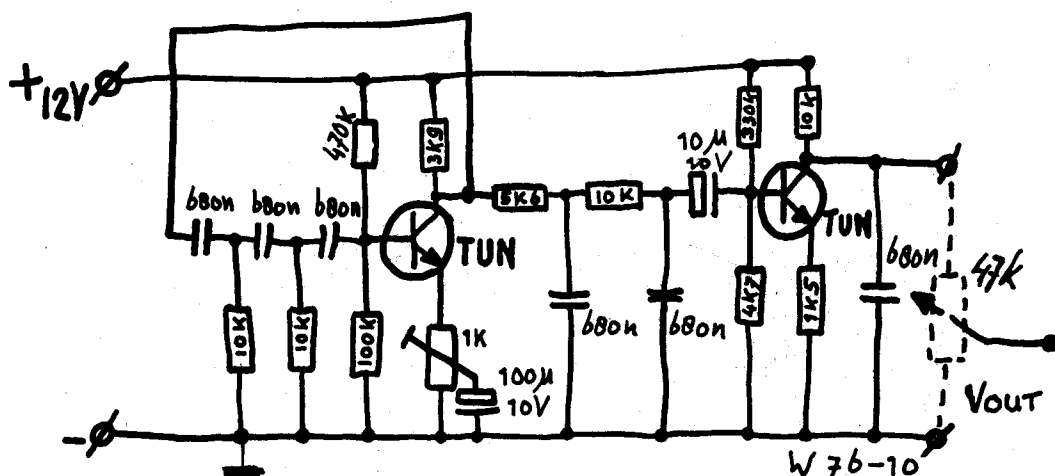
This is one more little circuit that may come in useful in the domestic environment.

It can be used when all other hints have failed to persuade late guests that they have overstayed their welcome.

GUEST ejector

The circuit produces a 14Hz signal. When fed to the Hi-Fi system, this produces an inaudible output from the loudspeakers. In practice, this has proved highly irritating - it produces a vague feeling of uneasiness. This mental harassment usually results in an almost immediate round of last goodbyes.

Warning: The host should avoid becoming irritated before his guest.



Technical note: be careful not to overload the Hi-Fi system. If the loudspeakers are overloaded, this will usually be audible as distortion... but if the power amplifier is overloaded, it may overheat and fail without giving audible warning of its distress.