

34 Multi-Input Music Synthesizer

□ The inputs to this synthesizer can be from any musical instruments. C4 can be from an electric

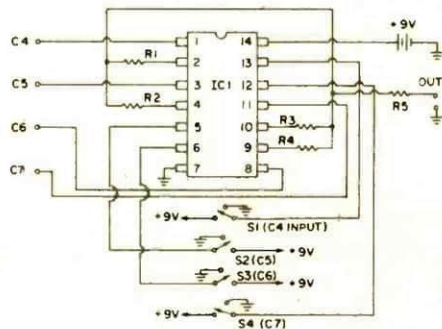
guitar, C5 from an electronic organ, etc. Or the inputs can be from the outputs of the "Octave

PARTS LIST FOR MULTI-INPUT MUSIC SYNTHESIZER

IC1—4016 quad bilateral switch

R1 through R5—1,000-ohm, 1/2-watt resistor

S1 through S4—SPDT slide switch



Music Maker" project. The voltage should not exceed 9 volts at these inputs. The output will be a combination of the inputs, where you control

the combining via the switches. The switch marked "S1" will put the C4 input through to the output when it is switched to the down position.