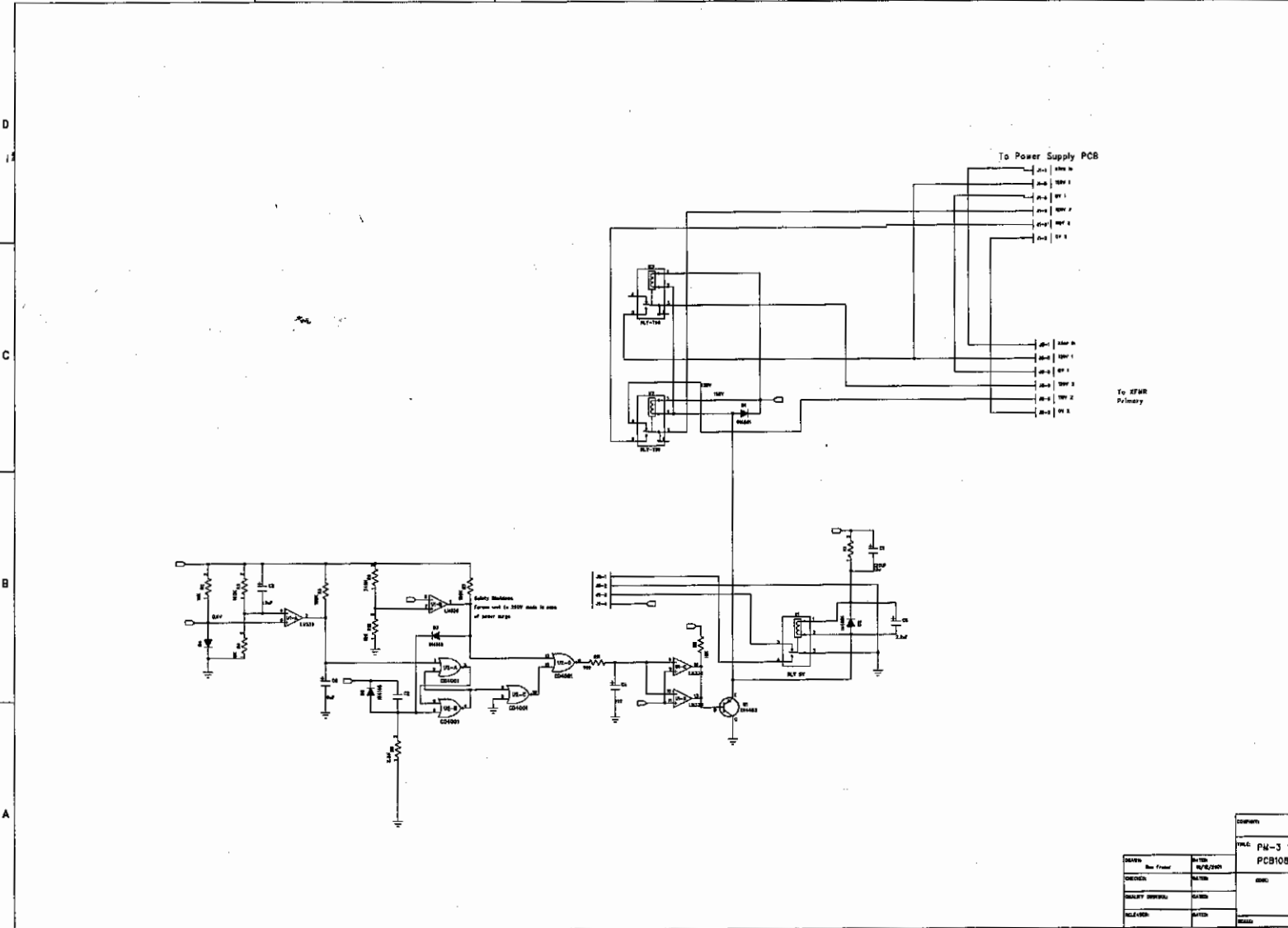


REVISION HISTORY			
REV	DATE	APPROVED	AUTH



DESIGN				DATE	
DESIGNED	BY	DATE	APPROVED	DATE	BY

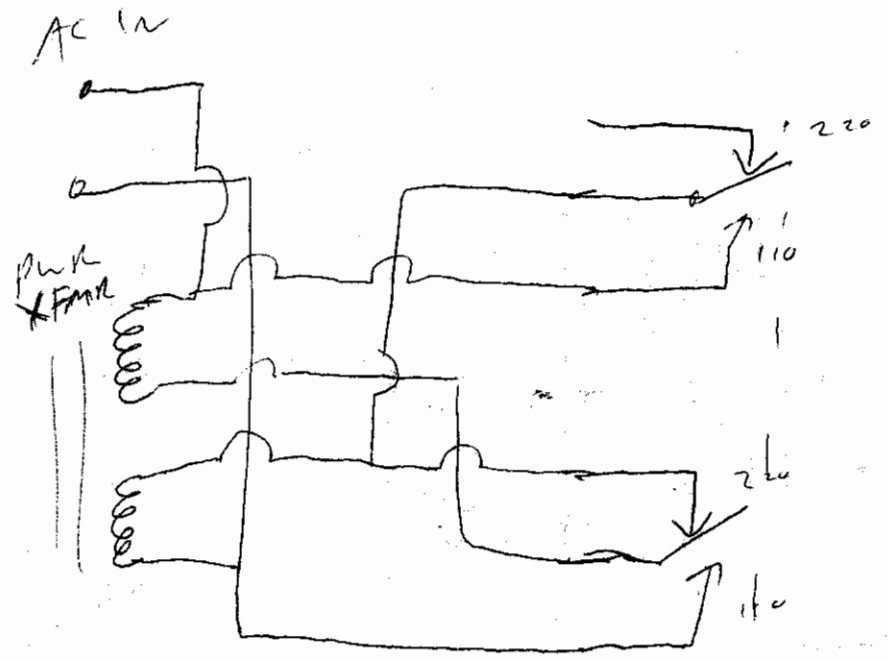
PARTS			
QTY	DESCRIPTION	REF	UNIT

PM-3 120/230V Auto Switch
PCB108

REV 1.1

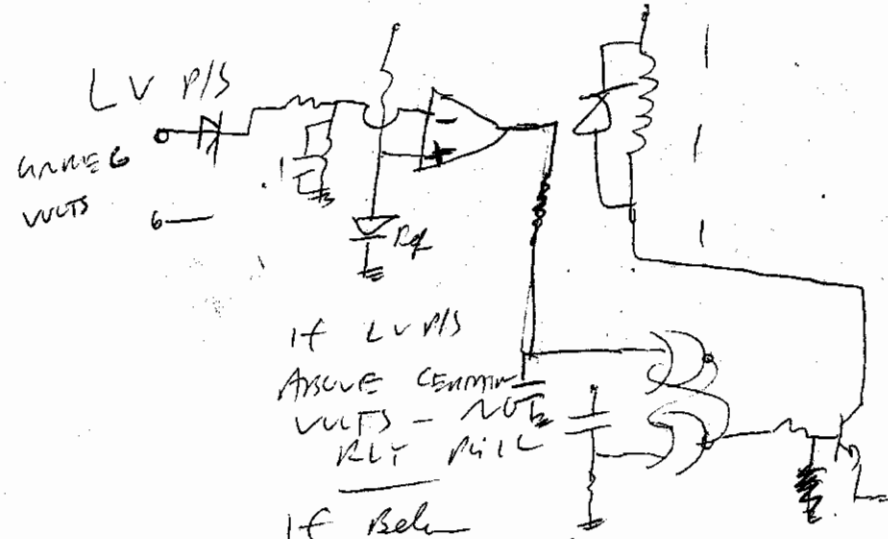
SHEET 1 OF 1

Automatic 110/220 Switch.



IF THERE IS
AN UNREGULATED SUPPLY
AVAILABLE.

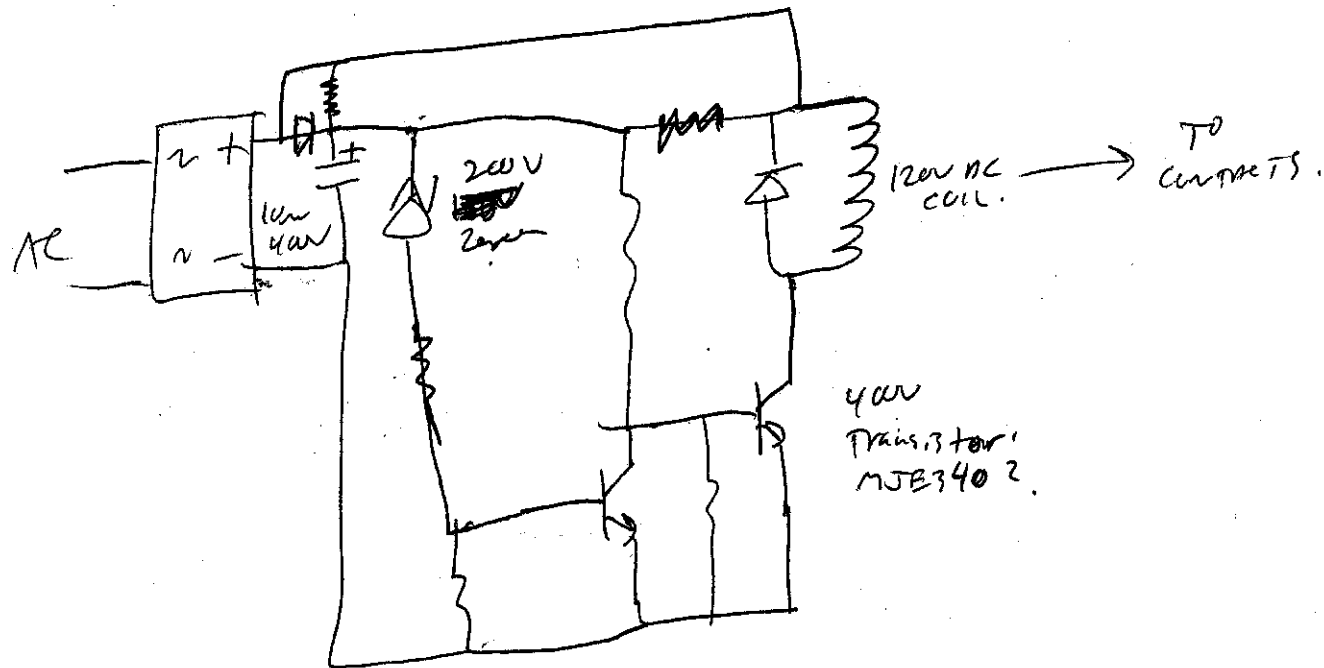
OR IF SWPS WILL WORK AT ALL
WITH L.V.



IF LV P/S
ABOVE CENTER
VOLTS - NO
RELAY WILL

IF RELAY
THEN NO
RELAY WILL

Relay Has to Pull In
at 40% of LV P/S



RELAY STAYS OFF FOR $> 140V AC$ IN

RELAY TRANS ON $< 130V AC$.

For all units